

Sandringham Avenue Wimbledon Chase, SW20 8JY

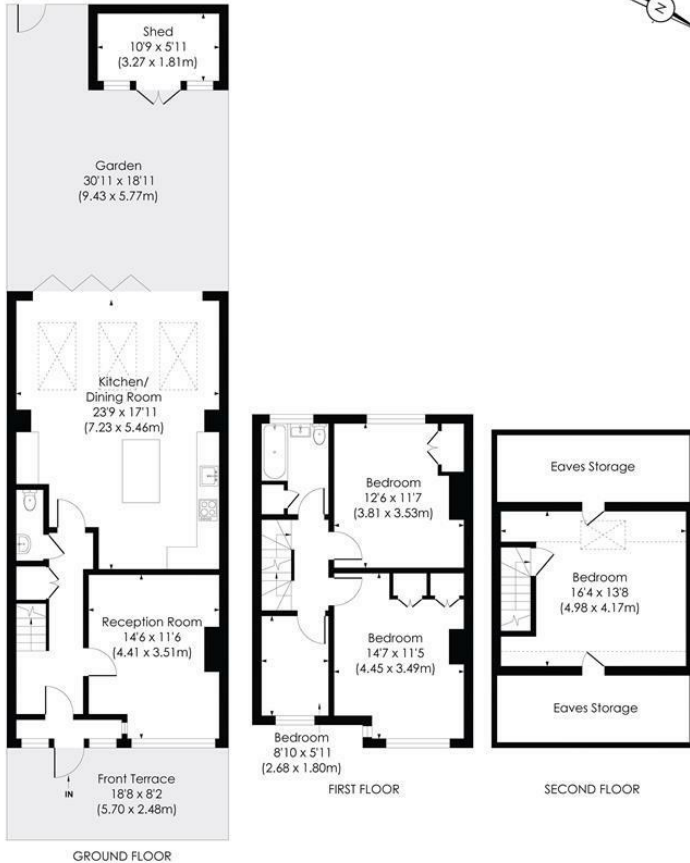
£1,150,000 Freehold



This superb (1393 sqft - 129.43 sqm) **FOUR BEDROOM** 1930's Mid terrace house has a stunning 7.23m x 5.46m open plan kitchen/dining/family room with quartz worktops, island and bi folding doors onto the West facing garden. Perfectly located within the Admissions Priority Area for Wimbledon Chase Primary School, Wimbledon Chase Station and access for both Raynes Park and Wimbledon. There is also an entrance hall with storage, downstairs w.c, spacious separate reception room with wood burner, plantation shutters and a modern family bathroom.

SANDRINGHAM AVENUE, SW20

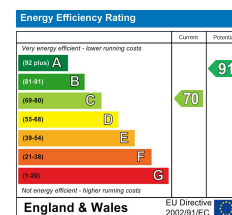
Approx. Gross Internal Floor Area
1393 Sq. ft/129.43 Sq. m



© Pixangle Property Marketing Ltd. info @pixangle.com Tel: 0208 870 2118
This floor plan has been prepared for illustration purposes only, in accordance with the latest RICS code of measuring and is not to scale. All measurements and areas are approximate and whilst every effort has been made to ensure the accuracy of the plan contained here, no responsibility is taken for any error, omission or misstatement.



- Four bedroom 1930s Terrace house
- Wimbledon Chase Primary School A.P.A
- Secluded West Facing garden with rear access
- Close to Wimbledon Chase Station and Shops
- Easy access to Raynes Park
- Easy access to Wimbledon Town Centre
- Stunning kitchen/dining/family room
- Downstairs w.c and spacious reception room
- EPC Rating - C
- Council Tax Band - E



For Free Mortgage Quote and Best Mortgage Rates, call Ellisons Mortgage Advisor on 0208 944 9595



Although these particulars are believed to be correct, their accuracy is not guaranteed and they do not form part of any contract.

Celebrating 30 years of successful Sales and Lettings in Merton

