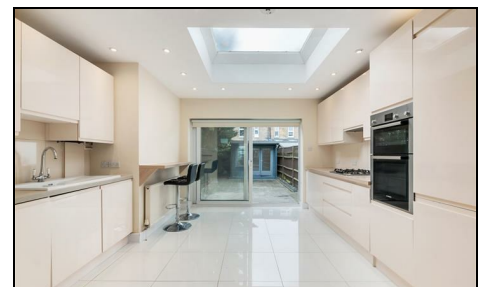
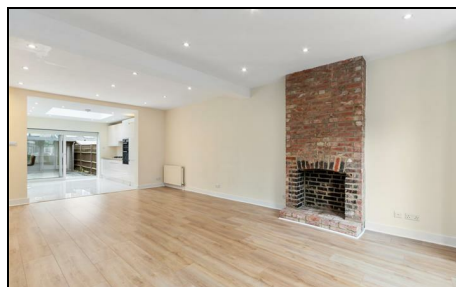


Aston Road Raynes Park, SW20 8BG

£850,000 Freehold



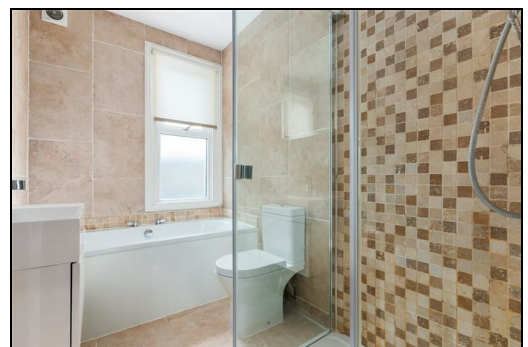
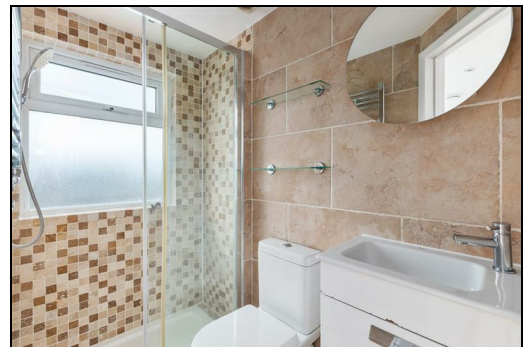
This spacious **THREE DOUBLE BEDROOM, TWO BATHROOM**, fully extended Edwardian Apostle House is perfectly located for Raynes Park Station and High Street (0.3 Miles). An excellent first/second time purchase with superb fully open ground floor incorporating modern kitchen, three double bedrooms (primary with en-suite and sliding doors) and a modern family bathroom. Offered to the market with no onward chain.

ASTON ROAD, SW20

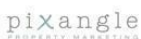
Approx. Gross Internal Floor Area

1298 Sq. ft/120.62 Sq. m (Incl. Eaves and Summer House)

1166 Sq. ft/108.37 Sq. m (Excl Eaves and Summer House)

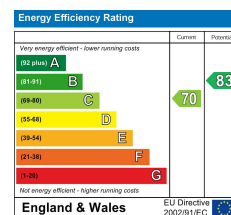


© Pixangle Property Marketing Ltd. info@pixangle.com Tel: 0208 870 2118



This floor plan has been prepared for the purpose of illustration only in accordance with the latest RICS code of measuring practice and is not to scale. All measurements and areas are approximate and whilst every effort has been made to ensure the accuracy of the plan contained here, no responsibility is taken for any error, omission or misstatement.

- Three Double Bedroom
- Two Modern Bathrooms
- Edwardian Apostle House
- Spacious Fully Open Ground Floor
- 0.3 Miles to Raynes Park High Street
- No Onward Chain
- Superb Primary Bedroom with En-Suite
- Landscaped Rear Garden with Home Office
- EPC - C
- Council Tax Band - D



For Free Mortgage Quote and Best Mortgage Rates, call Ellisons Mortgage Advisor on 0208 944 9595



Although these particulars are believed to be correct, their accuracy is not guaranteed and they do not form part of any contract.

Celebrating 30 years of successful Sales and Lettings in Merton

