

**Greenview Drive
Raynes Park, SW20 9DS**

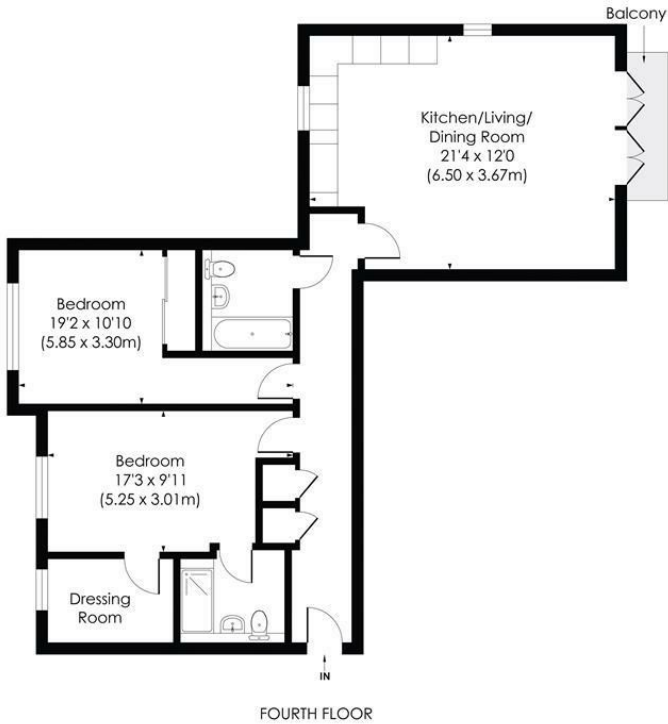
£650,000 Leasehold



This stunning 960 sqft NEWLY CONSTRUCTED, TWO DOUBLE BEDROOM, TWO BATHROOM Apartment with lift access, private balcony and allocated parking space is perfectly located for Raynes Park High Street and Station (0.4 Miles). Completion Set for Quarter 2 2024. New Build 10 Year Warranty, underfloor heating, gorgeous bathrooms, stylish kitchen/reception room, built in wardrobes for both bedrooms. NO ONWARD CHAIN.

GREENVIEW DRIVE, SW20

Approx. Gross Internal Floor Area
960 Sq. ft/89.20 Sq. m



FOURTH FLOOR

© Pixangle Property Marketing Ltd. info@pixangle.com Tel: 0208 870 2118



This floor plan has been prepared for the purpose of illustration only in accordance with the latest RICS code of measuring practice and is not to scale. All measurements and areas are approximate and whilst every effort has been made to ensure the accuracy of the plan contained here, no responsibility is taken for any error, omission or misstatement.



- Two Double Bedroom - Two Bathroom
- 960 sqft Newly Built Apartment
- 0.4 Miles to Raynes Park Station and High Street
- Allocated Parking Space, Balcony and Lift Access
- Due for Completion in Quarter 2 - 2024
- Under Floor Heating and Built in Wardrobes
- Stunning Kitchen and Bathrooms
- No Onward Chain - 10 Year New Build Warranty
- EPC -
- Council Tax Band -

| Energy Efficiency Rating | | |
|---|----------------------------|-----------|
| | Current | Potential |
| Very energy efficient - lower running costs | | |
| (92 plus) A | | |
| (81-91) B | | |
| (69-80) C | | |
| (55-68) D | | |
| (39-54) E | | |
| (21-38) F | | |
| (1-20) G | | |
| Not energy efficient - higher running costs | | |
| England & Wales | EU Directive 2002/91/EC | |

For Free Mortgage Quote and Best Mortgage Rates, call Ellisons Mortgage Advisor, Darren Marks on 0208 944 9595



Although these particulars are believed to be correct, their accuracy is not guaranteed and they do not form part of any contract.

Celebrating 30 years of successful Sales and Lettings in Merton

