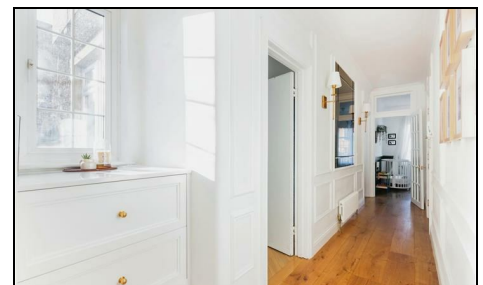


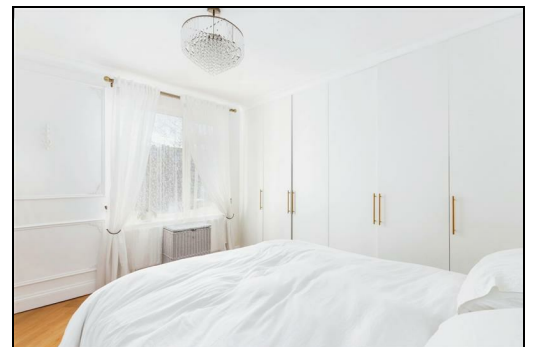
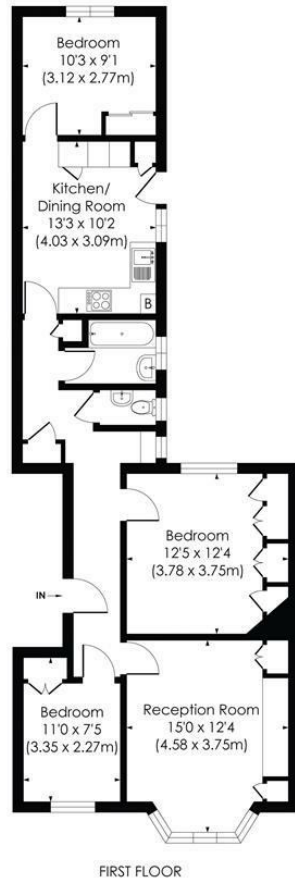
**Worple Road
West Wimbledon, SW20 8QT**

£550,000 Leasehold - Share of Freehold



This gorgeous 840 sqft THREE BEDROOM, first floor apartment has been beautifully refurbished throughout. Perfectly located for Raynes Park Station (0.1 Mile) and High Street. There is a 954 year lease, share of freehold, spacious kitchen with hard wood flooring and Corine work surfaces, modern bathroom, superb sized reception room and access to communal gardens.

WORPLE ROAD, SW20
 Approx. Gross Internal Floor Area
845 Sq. ft/78.5 Sq. m



© Pixangle Property Marketing Ltd. info@pixangle.com Tel: 0208 870 2118



This floor plan has been prepared for the purpose of illustration only in accordance with the latest RICS code of measuring practice and is not to scale. All measurements and areas are approximate and whilst every effort has been made to ensure the accuracy of the plan contained here, no responsibility is taken for any error, omission or misstatement.

- Three Bedroom First Floor Apartment
- Beautifully Presented Through Out
- 0.1 Mile to Raynes Park Station
- 840 sqft
- 954 Year Lease with Share of Freehold
- Gorgeous Kitchen with Corian Work Surfaces
- Beautiful Bathroom with Separate W.C
- Access to Communal Gardens
- EPC Rating - C
- Council Tax Band - D

Energy Efficiency Rating		Current	Possible
<small>Very energy efficient - lower running costs</small>			
(91-100)	A		
(81-90)	B		
(69-80)	C	69	80
(55-68)	D		
(39-54)	E		
(21-38)	F		
(1-20)	G		
<small>Not energy efficient - higher running costs</small>			
England & Wales		EU Directive 2002/91/EC	

For Free Mortgage Quote and Best Mortgage Rates, call Ellisons Mortgage Advisor on 0208 944 9595



Although these particulars are believed to be correct, their accuracy is not guaranteed and they do not form part of any contract.

Celebrating 30 years of successful Sales and Lettings in Merton

