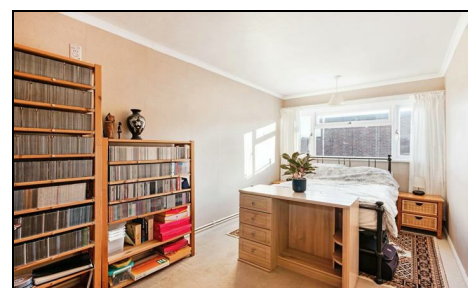
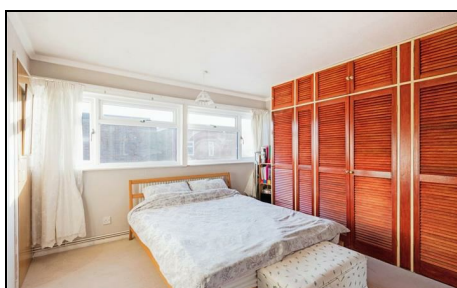


## Polesden Gardens Raynes Park, SW20 0UN

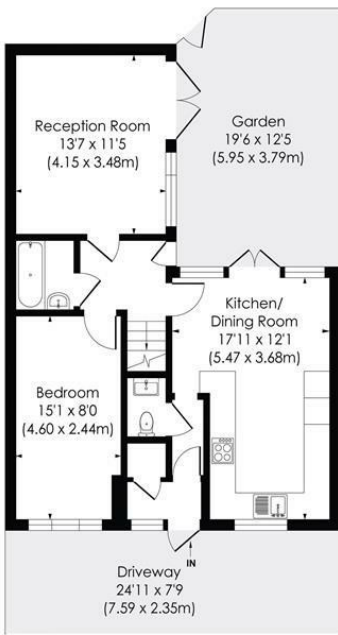
£465,000 Freehold



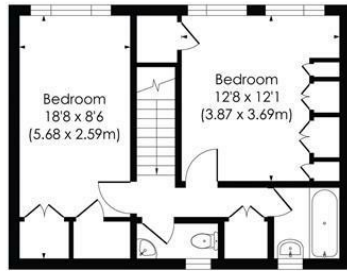
**This fantastic 1079sqft THREE DOUBLE BEDROOM, TWO BATHROOM freehold house has a private garden with rear access, modern kitchen, two reception rooms and parking is located only 0.6 Miles Raynes Park Station and High Street. An excellent option for first/second time buyers and buy to let investors alike.**

**POLEDSEN GARDENS, SW20**

Approx. Gross Internal Floor Area  
**1079 Sq. Ft/100.22 Sq. m**



GROUND FLOOR



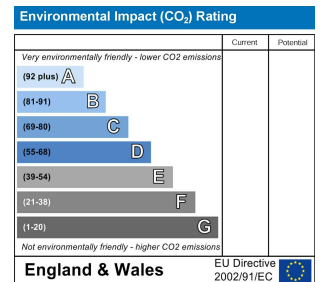
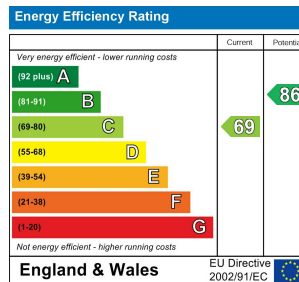
FIRST FLOOR



© Pixangle Property Marketing Ltd. info@pixangle.com Tel: 0208 870 2118

**pixangle** PROPERTY MARKETING  
 This floor plan has been prepared for the purpose of illustration only in accordance with the latest BS3 code of measuring practice and is not to scale. All measurements and areas are approximate and whilst every effort has been made to ensure the accuracy of the plan contained here, no responsibility is taken for any error, omission or misstatement.

- Three Double Bedroom
- Freehold House - 1079 SQFT
- Private Garden with Rear Access
- Modern Kitchen Open to Dining Room
- Two Neutrally Decorated Bathrooms
- 0.6 Miles to Raynes Park Station and High Street
- Ideal Buy To Let Investment
- Ground Rent - Approx £179.10 PA
- EPC - C
- Council Tax Band - C



**For Free Mortgage Quote and Best Mortgage Rates, call Ellisons Mortgage Advisor on 0208 944 9595**



Although these particulars are believed to be correct, their accuracy is not guaranteed and they do not form part of any contract.

**Celebrating 30 years of successful Sales and Lettings in Merton**

