

**Kingsbridge Road
Morden, SM4 4QB**

£595,000 Freehold



A spacious three bedroom family home, located in a popular Lower Morden residential road. With open plan kitchen/dining room, a bright separate reception room. Great potential for extension (stpp) rear garden, large garage to the rear and parking. There are transport links close by in Morden and Raynes park as well as good schools within walking distance.

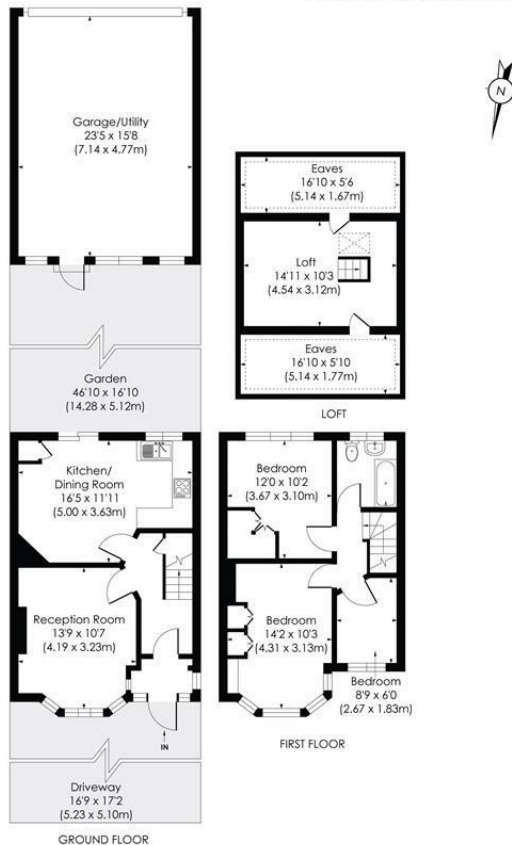
KINGSBRIDGE ROAD, SM4

Approx. Gross Internal Floor Area

849 Sq. ft/78.87 Sq. m (Excluding Loft and Garage)

Loft (Including Eaves): 343 Sq. ft/31.84 Sq. m

Garage: 367 Sq. ft./34.06 Sq. m

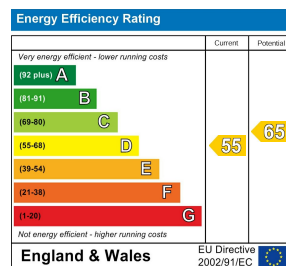


© Pixangle Property Marketing Ltd. info@pixangle.com Tel: 0208 870 2118

pixangle
PROPERTY MARKETING

This floor plan has been prepared for the purpose of illustration only in accordance with the latest RICS code of measuring practice and is not to scale. All measurements and areas are approximate and whilst every effort has been made to ensure the accuracy of the plan contained here, no responsibility is taken for any error, omission or misstatement.

- Three bedrooms
- Open plan kitchen/dining room
- Large garage to the rear
- Parking
- Popular location in Lower Morden
- Walking distance to good schools
- EPC - D
- Council Tax Band - D



For Free Mortgage Quote and Best Mortgage Rates, call Ellisons Mortgage Advisor on 0208 543 1166



Although these particulars are believed to be correct, their accuracy is not guaranteed and they do not form part of any contract.

Celebrating 30 years
of successful Sales and
Lettings in Merton

