

Shaldon Drive Morden, SM4 4BH

£685,000 Freehold



In excellent condition throughout, a four bedroom, two bathroom semi-detached 'Selley' built family home offered to the market with no onward chain in the sought after Hillcross area of Morden. Located in one of Morden's most popular residential roads and ideally located for primary schools and transport links including Morden Northern Line, South Merton Thameslink and Raynes Park Trainline.

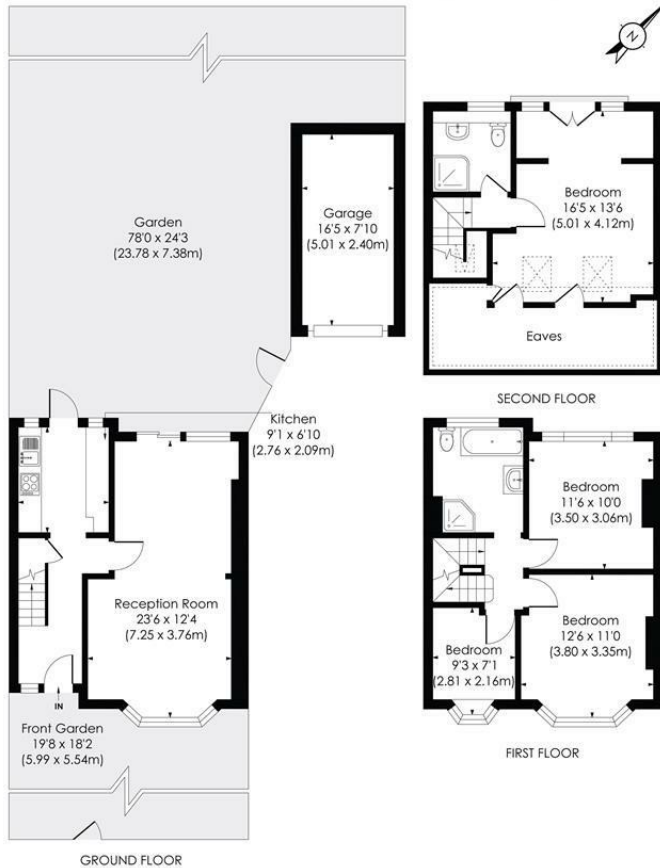
Comprising a double length reception and a luxury fitted kitchen with doors opening out onto a secluded 78ft rear garden with a garage to the side of the property. Upstairs are two double bedrooms, a single bedroom and a modern family bathroom, with the principal bedroom and en-suite located in the converted loft with a Juliet Balcony. This is a superb family home and viewings are highly recommended.

SHALDON DRIVE, SM4

Approx. Gross Internal Floor Area

1360 Sq. ft/126.35 Sq. m (Including Reduced Height and Garage)

1166 Sq. ft/108.33 Sq. m (Excluding Reduced Height and Garage)

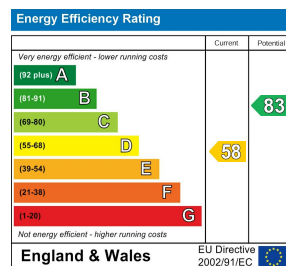


© Pixangle Property Marketing Ltd. info@pixangle.com Tel: 0208 870 2118

pixangle
PROPERTY MARKETING

This floor plan has been prepared for the purpose of illustration only in accordance with the latest RICS code of measuring practice and is not to scale. All measurements and areas are approximate and whilst every effort has been made to ensure the accuracy of the plan contained here, no responsibility is taken for any error, omission or misstatement.

- Semi-Detached 'Selley' Built Family House
- Four Bedrooms & Two Bathrooms
- Large 78ft Garden
- Garage
- Desirable 'Hillcross' Area of Morden, SM4
- Close to Popular Schools and Multiple Transport Links
- No Onward Chain
- Freehold
- EPC Rating - D
- Merton Council Tax Band - D



For Free Mortgage Quote and Best Mortgage Rates, call Ellisons Mortgage Advisor on 0208 543 1166



Although these particulars are believed to be correct, their accuracy is not guaranteed and they do not form part of any contract.

Celebrating 30 years
of successful Sales and
Lettings in Merton

