

## Cherrywood Lane Morden, SM4 4HS

**£725,000 Freehold**



**A spacious and desirable three double bedroom end of terrace Blay home with a south east facing garden backing on Cherry Woods with a garage and off street parking. Close to the open spaces of Cannon Hill Common and within reach of Raynes Park and Morden town center.**

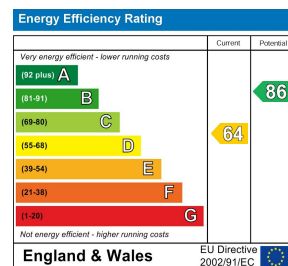
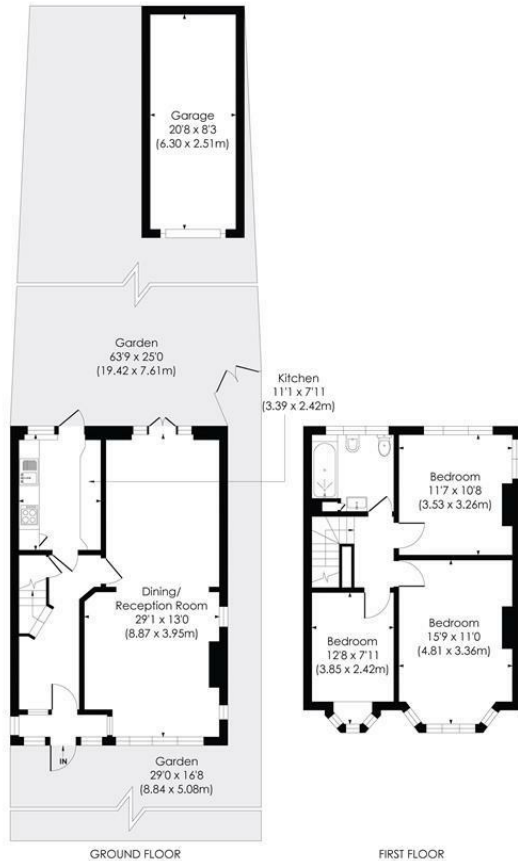


## CHERRYWOOD LANE, SM4

Approx. Gross Internal Floor Area

1291 Sq. ft/119.92 Sq. m (Incl. Garage)

1070 Sq. ft/99.45 Sq. m (Excl. Garage)



- Three Double Bedroom, 1930's End Of Terrace "Blay" House
- Excellent Potential To Extend S.T.P.P
- South East Facing Rear Garden
- Views over Cherry Woods
- Off Street Parking and Garage
- Neutrally Decorated Through Out
- Transport Links from Morden and Raynes Park
- Well Regarded Local Schools
- Council Tax Band - E
- EPC - D

For Free Mortgage Quote and Best Mortgage Rates, call Ellisons Mortgage Advisor on 0208 543 1166



Although these particulars are believed to be correct, their accuracy is not guaranteed and they do not form part of any contract.

Celebrating 30 years of successful Sales and Lettings in Merton

