

**Malmesbury Road
Morden, SM4 6HH**

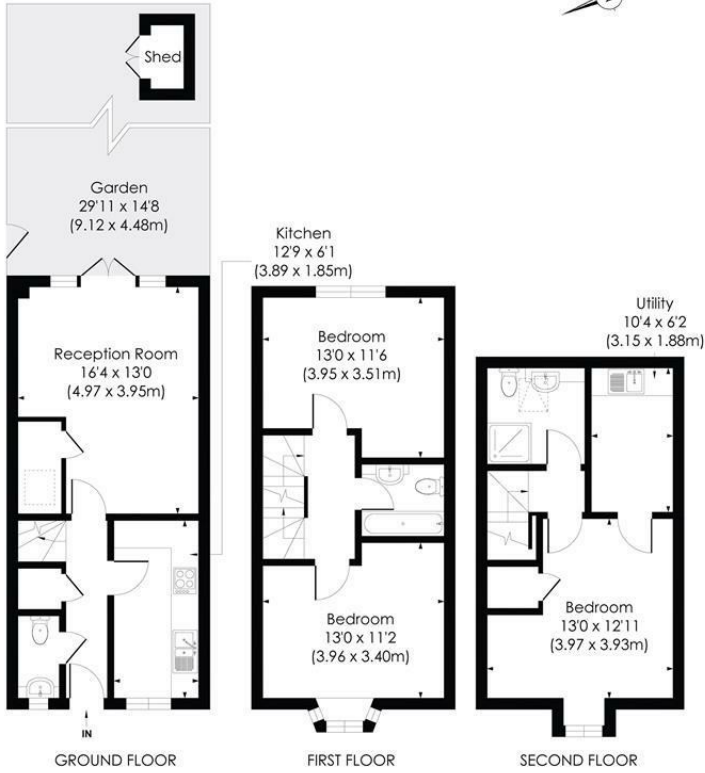
£575,000 Freehold



Beautifully presented spacious three bedroom end of terrace town house in a sought after gated residential development, generous living accommodation with doors out to a lovely private garden. Two bathrooms and a ground floor WC, off street parking to the front. This is a fantastic house for any families looking for a home in the area they can move straight into.

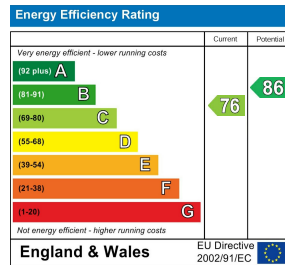
SHAW COURT, SM4

Approx. Gross Internal Floor Area
1088 Sq. ft/101.07 Sq. m



pixangle PROPERTY MARKETING
This floor plan has been prepared for the purpose of illustration only in accordance with the latest RICS code of measuring practice and is not to scale. All measurements and areas are approximate and whilst every effort has been made to ensure the accuracy of the plan contained here, no responsibility is taken for any error, omission or misstatement.

- End of terrace house
- Gated development
- Off Street parking
- Three bedrooms
- Well presented throughout
- Lovely private garden
- EPC- C
- Merton Council Tax Band- E



For Free Mortgage Quote and Best Mortgage Rates, call Ellisons Mortgage Advisor on 0208 543 1166



Although these particulars are believed to be correct, their accuracy is not guaranteed and they do not form part of any contract.

Celebrating 30 years of successful Sales and Lettings in Merton

