

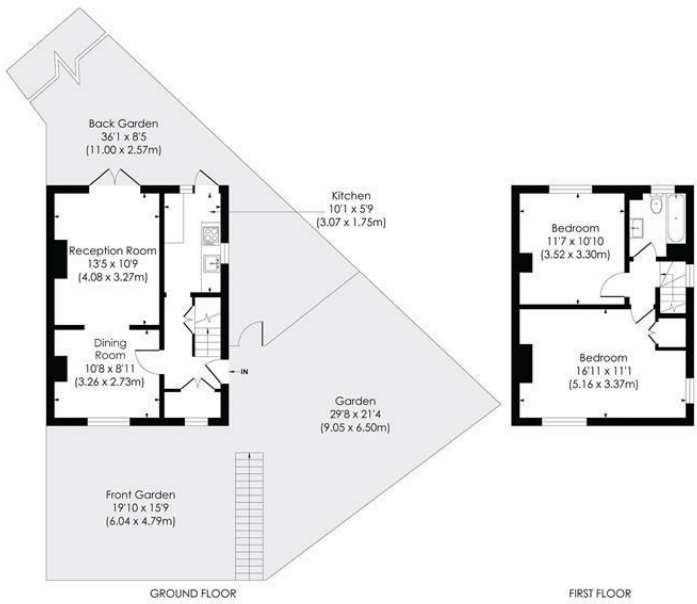
## Hyde Walk Morden, SM4 6LR

£425,000 Freehold



**A well presented two double bedroom end of terrace freehold house for sale with beautiful private garden to the rear and side. In a sought after residential location, walking distance to St Helier over ground station. Possibility to extend subject to planning permission. A lovely house for any buyers looking for a home they can move straight into.**

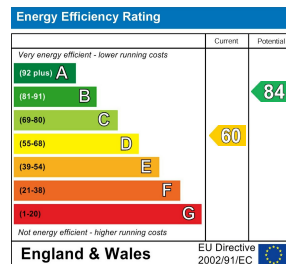
**HYDE WALK, SM4**  
 Approx. Gross Internal Floor Area  
 773 Sq. ft/71.82 Sq. m



**pixangle**  
PROPERTY MARKETING

© Pixangle Property Marketing Ltd. info @pixangle.com Tel: 0208 870 2118  
 This floor plan has been prepared for illustration purposes only. In accordance with the latest RICS code of measuring and is not to scale.  
 All measurements and areas are approximate and whilst every effort has been made to ensure the accuracy of the plan contained here, no responsibility is taken for any error, omission or misstatement.

- End of Terrace House
- Two double bedrooms
- Near to overground station
- Well presented
- Sought after location
- EPC - D
- Council tax band - C



For Free Mortgage Quote and Best Mortgage Rates, call Ellisons Mortgage Advisor on 0208 543 1166



Although these particulars are believed to be correct, their accuracy is not guaranteed and they do not form part of any contract.

**Celebrating 30 years of successful Sales and Lettings in Merton**

