

Cannon Hill Lane Raynes Park, SW20 9ET

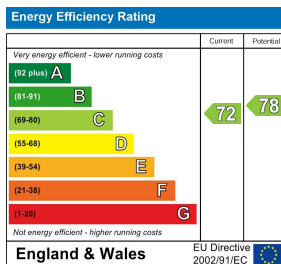
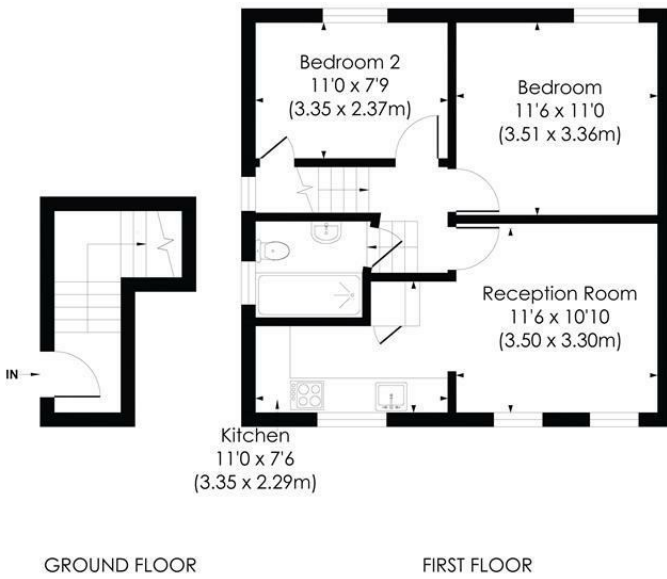
£425,000 Leasehold - Share of Freehold



Well presented two double bedroom first floor conversion flat in sought after residential location with its own entrance. A short walk to Wimbledon Chase train station and Raynes park. With a good length lease of over 900 years and being sold with a share of freehold. This is a fantastic property for any buyers looking for a home in the area they can move straight into.

CANNON HILL LANE, SW20

Approx. Gross Internal Floor Area
558 Sq. ft/51.82 Sq. m



- First Floor conversion flat
- Two double bedrooms
- Sought after location
- Long lease and Share of freehold
- Well presented
- Own front Door
- Merton Council Tax Band - C
- EPC - C

For Free Mortgage Quote and Best Mortgage Rates, call Ellisons Mortgage Advisor on 0208 543 1166



Although these particulars are believed to be correct, their accuracy is not guaranteed and they do not form part of any contract.

Celebrating 30 years of successful Sales and Lettings in Merton

