

## Salcombe Drive Morden, SM4 4LD

£650,000 Freehold



**A spacious extended three bedroom end of terrace house, located in a popular residential road within the Lower Morden area. With a lovely bright 20' kitchen extension and downstairs shower room. Additional 24' through lounge leading to a secluded rear garden with a great garage/work shop. An ideal family home with lots of potential to extend further (stpp) and offered with no onward chain**

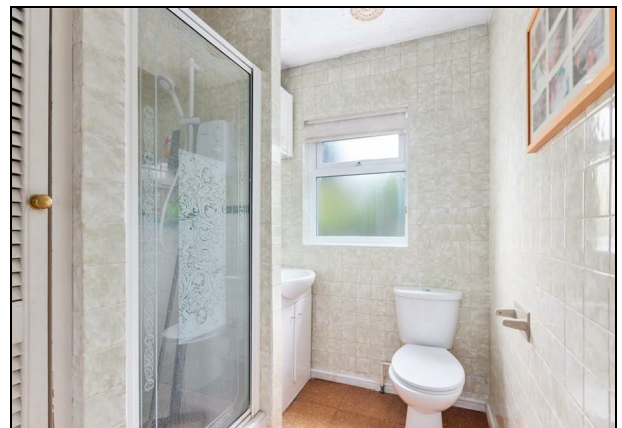
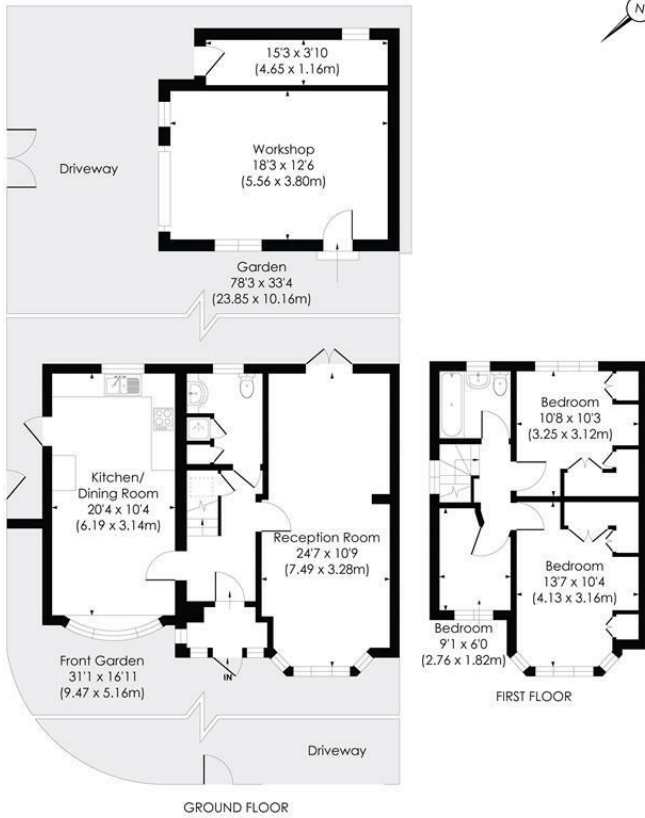


**SALCOMBE DRIVE, SM4**

Approx. Gross Internal Floor Area

1298 Sq. ft/120.57 Sq.m (Incl. Outbuildings)

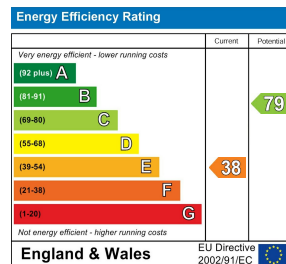
1009 Sq. ft/93.76 Sq.m (Excl. Outbuildings)



This floor plan has been prepared for the purpose of illustration only in accordance with the latest RICS code of measuring practice and is not to scale. All measurements and areas are approximate and whilst every effort has been made to ensure the accuracy of the plan contained here, no responsibility is taken for any error, omission or misstatement.

© Pixangle Property Marketing Ltd. info@pixangle.com Tel: 0208 870 2118

- Three bedroom end of terrace house
- Ground floor extension
- Kitchen/dining room
- Garage/workshop
- Through lounge
- Two bathrooms
- No onward chain



For Free Mortgage Quote and Best Mortgage Rates, call Ellisons Mortgage Advisor on 0208 543 1166



Although these particulars are believed to be correct, their accuracy is not guaranteed and they do not form part of any contract.

Celebrating 30 years of successful Sales and Lettings in Merton

