

**Templecombe Way
Morden, SM4 4JG**

£599,950 Freehold

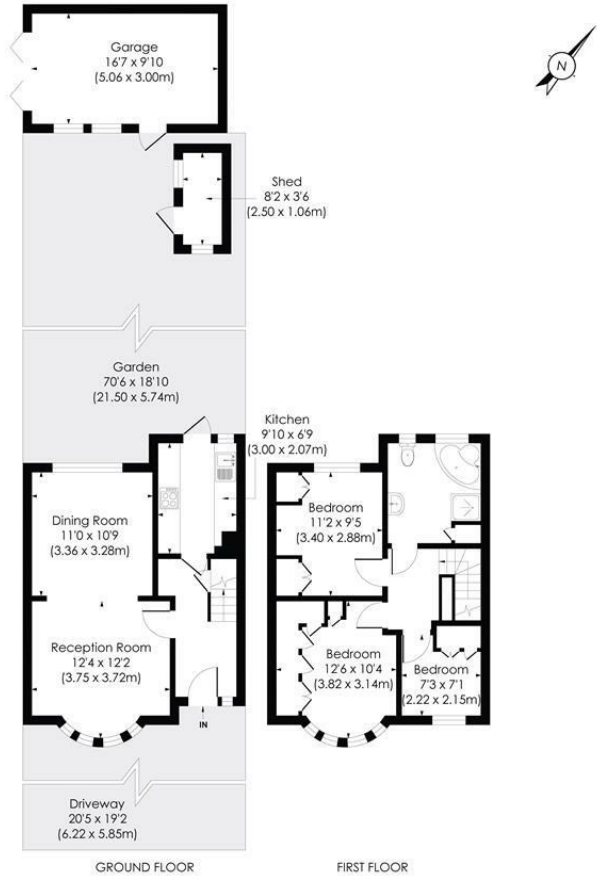


A spacious three bedroom end of terrace house situated in a sought after residential location. Off street parking to the front and garage at the rear. Lovely private West facing garden. Possibility to extend subject to planning permission. This is a fantastic house for any families looking for a home in the area they can extend.

TEMPLECOMBE WAY, SM4

Approx. Gross Internal Floor Area

1005 Sq. ft/93.40 Sq. m
Including Garage

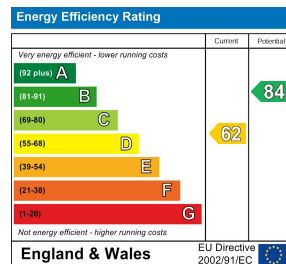


pixangle
PROPERTY MARKETING

This floor plan has been prepared for illustration purposes only, in accordance with the latest RICS code of measuring and is not to scale. All measurements and areas are approximate and whilst every effort has been made to ensure the accuracy of the plan contained here, no responsibility is taken for any error, omission or misstatement.

© Pixangle Property Marketing Ltd. info@pixangle.com Tel: 0208 870 2118

- Three bedroom House
- Off Street Parking
- Sought after location
- Garage
- West facing Garden
- EPC- D
- Merton Council Tax Band - D



For Free Mortgage Quote and Best Mortgage Rates, call Ellisons Mortgage Advisor on 0208 543 1166



Although these particulars are believed to be correct, their accuracy is not guaranteed and they do not form part of any contract.

Celebrating 30 years
of successful Sales and
Lettings in Merton

