

**St. Helier Avenue
Morden, SM4 6JR**

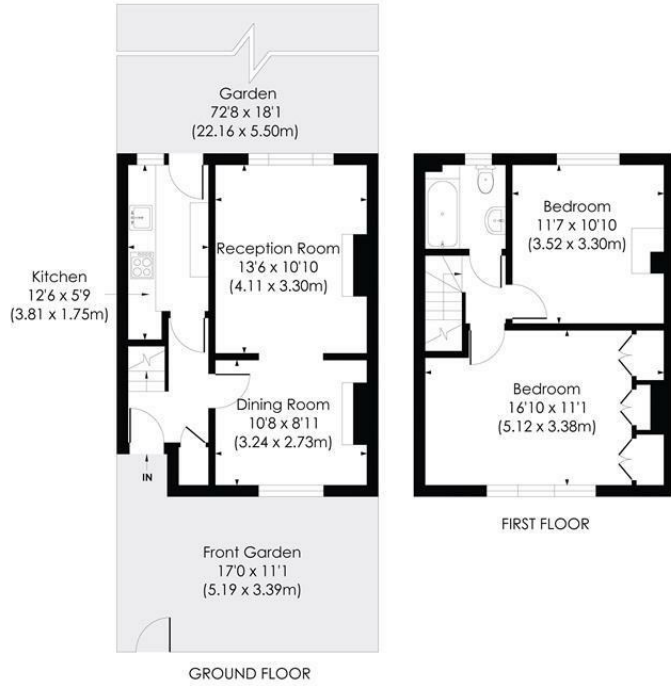
£425,000 Freehold



A well presented two double bedroom house in sought after location near to transport. Lovely spacious private garden. Possibility to also extended Subject to planning permission. Modern fitted kitchen and bathroom. This is a fantastic property for any buyers looking for a home in the area they can move straight into.

ST HELIER AVENUE, SM4

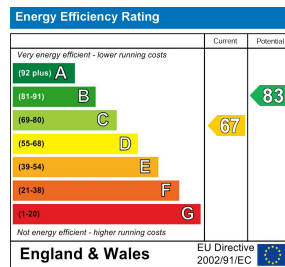
Approx. Gross Internal Floor Area
756 Sq. ft/70.20 Sq. m



© Pixangle Property Marketing Ltd. info@pixangle.com Tel: 0208 870 2118
 This floor plan has been prepared for the purpose of illustration only in accordance with the latest RICS code of measuring practice and is not to scale. All measurements and areas are approximate and whilst every effort has been made to ensure the accuracy of the plan contained here, no responsibility is taken for any error, omission or misstatement.



- Two double bedrooms
- Large private garden
- Well presented throughout
- Possibility to extend STPP
- Merton Council Tax Band - C
- EPC - D



For Free Mortgage Quote and Best Mortgage Rates, call Ellisons Mortgage Advisor on 0208 543 1166



Although these particulars are believed to be correct, their accuracy is not guaranteed and they do not form part of any contract.

Celebrating 30 years of successful Sales and Lettings in Merton

