

Darley Gardens Morden, SM4 6QF

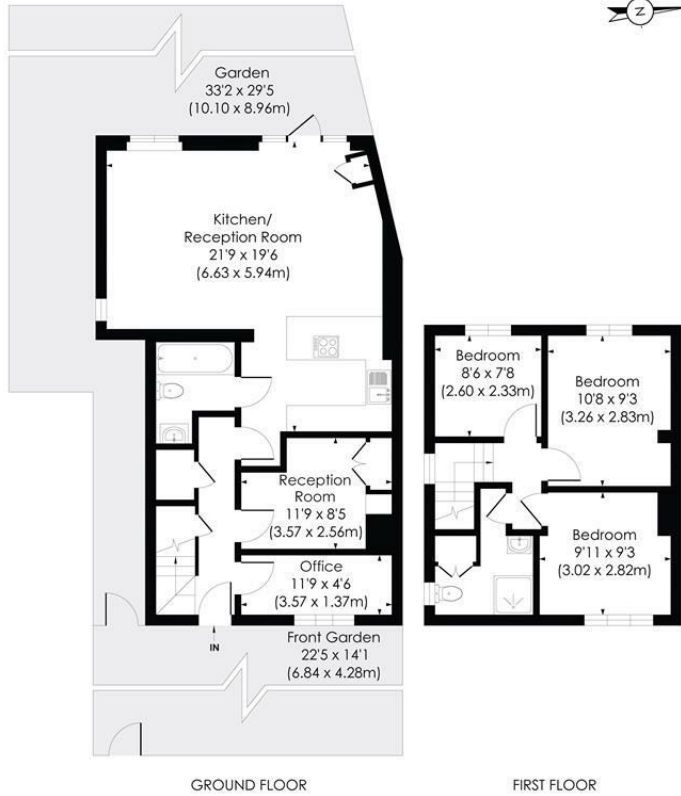
£520,000 Freehold



A beautifully presented three bedroom extended end of terrace family home in sought after residential location near to transport. Being sold with the benefit off no onward chain. This is a great house for any buyers looking for a home they can move straight into. Possibility to extend further subject to planning permission.

DARLEY GARDENS, SM4

Approx. Gross Internal Floor Area
1032 Sq. ft/95.83 Sq. m

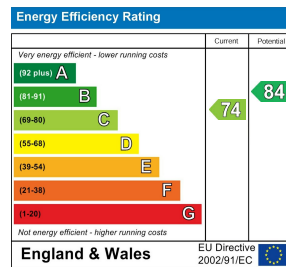


pixangle
PROPERTY MARKETING

This floor plan has been prepared for the purpose of illustration only in accordance with the latest RICS code of measuring practice and is not to scale. All measurements and areas are approximate and whilst every effort has been made to ensure the accuracy of the plan contained here, no responsibility is taken for any error, omission or misstatement.

© Pixangle Property Marketing Ltd. info@pixangle.com Tel: 0208 870 2118

- Three bedrooms
- End of Terrace
- Well presented throughout
- No onward chain
- Residential location
- Merton Council - D
- EPC -C



For Free Mortgage Quote and Best Mortgage Rates, call Ellisons Mortgage Advisor on 0208 543 1166



Although these particulars are believed to be correct, their accuracy is not guaranteed and they do not form part of any contract.

Celebrating 30 years
of successful Sales and
Lettings in Merton

