

Hunston Road Morden, SM4 6NF

£450,000 Freehold

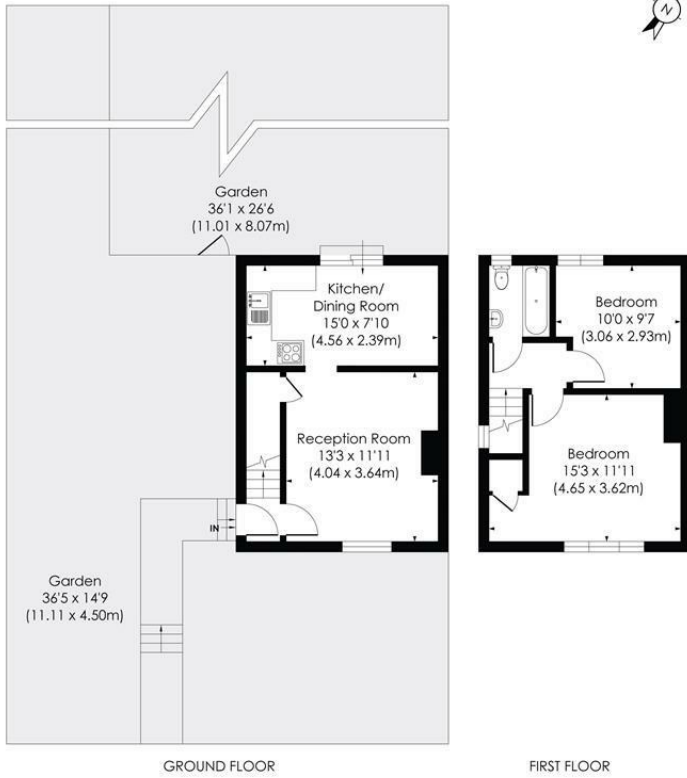


A spacious two double bedroom end of terrace house located in a sought after residential road. A spacious sized reception room. Kitchen dinner with door to large private rear and side garden. Offered with the benefit of no onward chain and potential to extend (STPP).

HUNSTON ROAD, SM4

Approx. Gross Internal Floor Area

663 Sq. ft/61.56 Sq. m



© Pixangle Property Marketing Ltd. info@pixangle.com Tel: 0208 870 2118

pixangle
PROPERTY MARKETING

This floor plan has been prepared for the purpose of illustration only in accordance with the latest RICS code of measuring practice and is not to scale. All measurements and areas are approximate and whilst every effort has been made to ensure the accuracy of the plan contained here, no responsibility is taken for any error, omission or misstatement.

- Two Double bedrooms
- End of Terrace
- No Onward Chain
- Sought after location
- Possibility to Extend STPP
- EPC - D
- Sutton Council Tax Band - C

Energy Efficiency Rating		Current	Potential
Very energy efficient - lower running costs			
(92 plus)	A		86
(81-91)	B		
(69-80)	C		
(55-68)	D	66	
(39-54)	E		
(21-38)	F		
(1-20)	G		
Not energy efficient - higher running costs			
England & Wales		EU Directive 2002/91/EC	

For Free Mortgage Quote and Best Mortgage Rates, call Ellisons Mortgage Advisor on 0208 543 1166



Although these particulars are believed to be correct, their accuracy is not guaranteed and they do not form part of any contract.

Celebrating 30 years
of successful Sales and
Lettings in Merton

