

The Holt, London Road Morden, SM4 5AP

£285,000 Leasehold

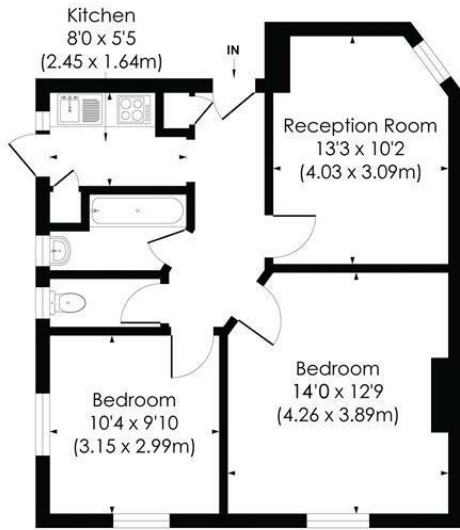


Spacious two bedrooms ground floor purpose built apartment in a central location moments from Morden Underground Northern line tube station. Being sold with the benefit of no onward chain and a long lease. This is a fantastic opportunity for any first time buyers or buy to let investors.

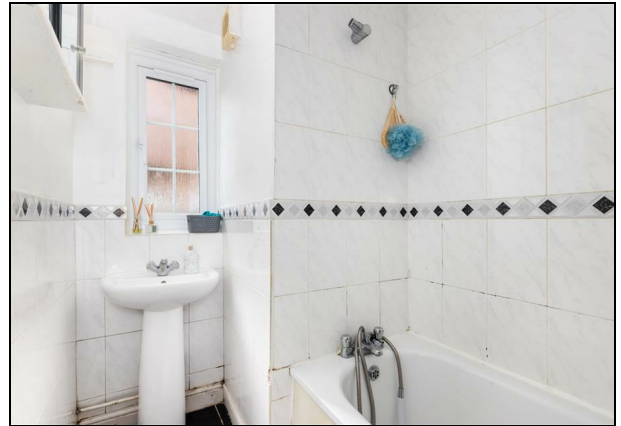
THE HOLT, SM4

Approx. Gross Internal Floor Area

588 Sq. ft/54.67 Sq. m



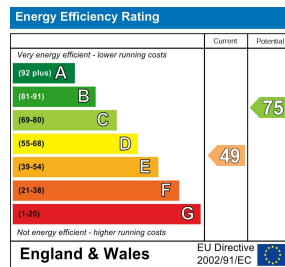
GROUND FLOOR



© Pixangle Property Marketing Ltd. info@pixangle.com Tel: 0208 870 2118
This floor plan has been prepared for the purpose of illustration only in accordance with the latest RICS code of measuring practice and is not to scale. All measurements and areas are approximate and whilst every effort has been made to ensure the accuracy of the plan contained here, no responsibility is taken for any error, omission or misstatement.



- Spacious two bedroom Flat
- Central Location
- No Onward chain
- Near to the Northern line tube station
- EPC - E
- Merton Council Tax Band - C
- Lease : 984 years remaining
- Ground Rent : £25.00 Quarterly
- Service Charge £650.00 Quarterly



For Free Mortgage Quote and Best Mortgage Rates, call Ellisons Mortgage Advisor on 0208 543 1166



Although these particulars are believed to be correct, their accuracy is not guaranteed and they do not form part of any contract.

Celebrating 30 years of successful Sales and Lettings in Merton

