

1 The Holt, London Road Morden, SM4 5AP

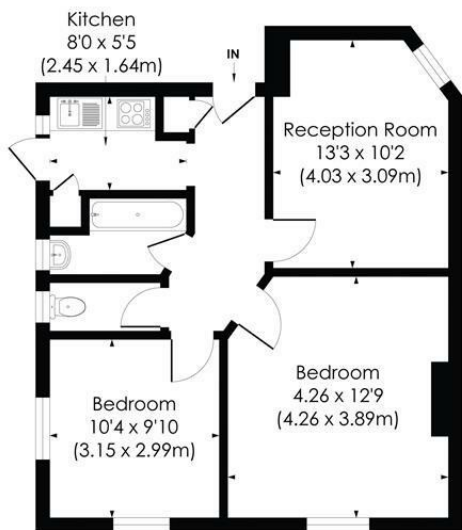
£295,000 Leasehold



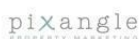
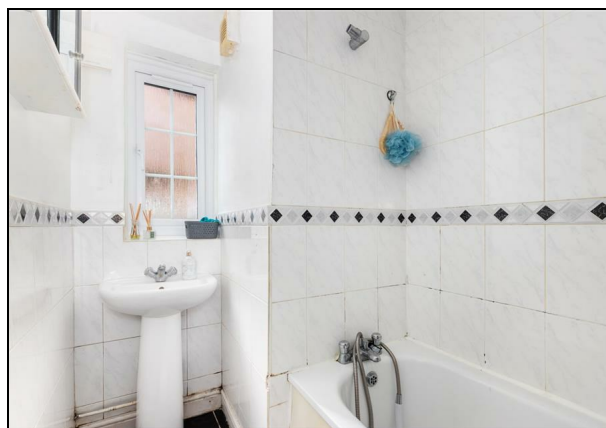
Spacious two bedroom ground floor purpose built apartment in a fantastic central location moments from Morden Underground Northern line tube station. Being sold with the benefit of no onward chain and long lease. This is a fantastic opportunity for any first time buyers or buy to let investors.

THE HOLT, SM4

Approx. Gross Internal Floor Area
588 Sq. ft/54.67 Sq. m

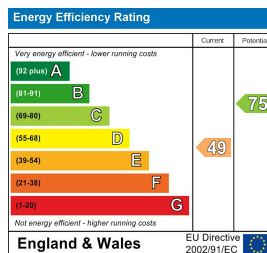


GROUND FLOOR



© Pixangle Property Marketing Ltd. info@pixangle.com Tel: 0208 870 2118
 This floor plan has been prepared for the purpose of illustration only in accordance with the latest RICS code of measuring practice and is not to scale. All measurements and areas are approximate and whilst every effort has been made to ensure the accuracy of the plan contained here, no responsibility is taken for any error, omission or misstatement.

- Spacious two bedroom Flat
- Central Location
- No Onward chain
- Near to the Northern line tube station
- EPC - E
- Merton Council Tax Band - C



For Free Mortgage Quote and Best Mortgage Rates, call Ellisons Mortgage Advisor, on 0208 543 1166