

Hillcross Avenue Morden, SM4 4BX

£635,000 Freehold

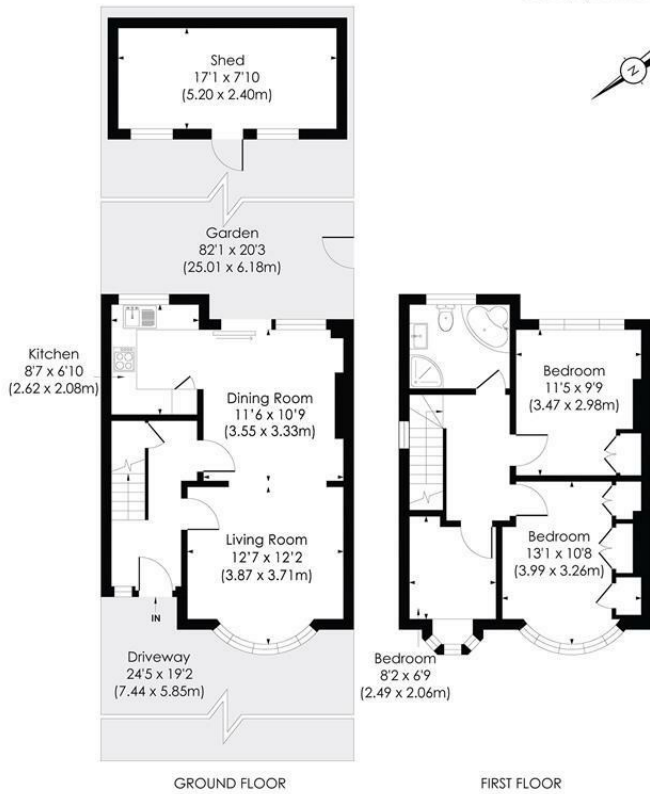


Superb three bedroom end of terrace period house with off street parking for two cars to the front. Spacious private garden backing onto Morden Park. Generous living space and beautifully presented throughout. Near to a selection of transport and possibility to be extended STPP. This is a lovely family house for any buyers looking for a home in the area.

HILLCROSS AVENUE, SM4

Approx. Gross Internal Floor Area

850 Sq. ft/78.99 Sq.m

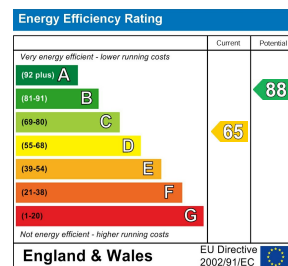


© Pixangle Property Marketing Ltd. info@pixangle.com Tel: 0208 870 2118

pixangle
PROPERTY MARKETING

This floor plan has been prepared for the purpose of illustration only in accordance with the latest RICS code of measuring practice and is not to scale. All measurements and areas are approximate and whilst every effort has been made to ensure the accuracy of the plan contained here, no responsibility is taken for any error, omission or misstatement.

- Three Bedroom Home
- End Of Terrace
- Off Street Parking
- Large Private Garden
- Sought After Location
- Backing Onto Morden Park
- EPC - D
- Merton Council Tax Band - D



For Free Mortgage Quote and Best Mortgage Rates, call Ellisons Mortgage Advisor on 0208 543 1166



Although these particulars are believed to be correct, their accuracy is not guaranteed and they do not form part of any contract.

Celebrating 30 years of successful Sales and Lettings in Merton

