

London Road  
Morden, SM4 5AT

£555,000 Freehold

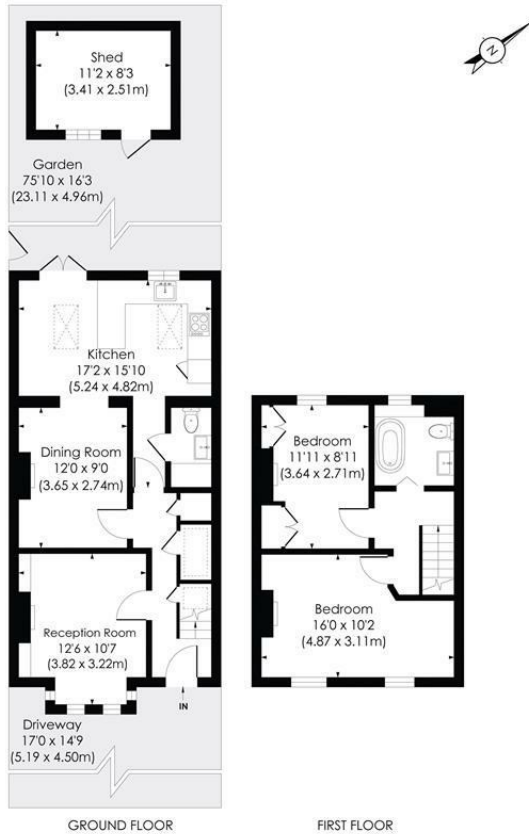


**A stunning two bedroom extended cottage, located moments from Morden Town centre, with Northern line tube station and local amenities. Benefitting from a lovely bright reception room, open plan kitchen/dining room, a downstairs W.C and also retaining many original features, as well as a private West facing 75ft rear garden. The property is well presented throughout and would make an ideal first time freehold home.**

**LONDON ROAD, SM4**

Approx. Gross Internal Floor Area

**889 Sq. ft/82.64 Sq. m**

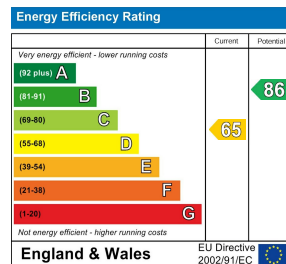
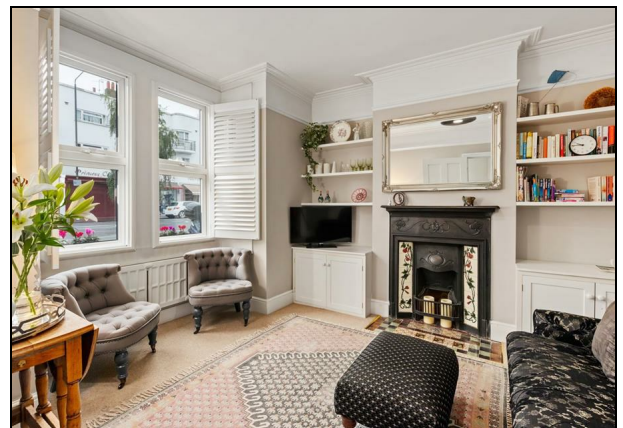


© Pixangle Property Marketing Ltd. info@pixangle.com Tel: 0208 870 2118



This floor plan has been prepared for the purpose of illustration only in accordance with the latest RICS code of measuring practice and is not to scale. All measurements and areas are approximate and whilst every effort has been made to ensure the accuracy of the plan contained here, no responsibility is taken for any error, omission or misstatement.

- Two Double Bedroom Cottage
- Extended On The Ground Floor
- Downstairs WC
- Modern Upstairs Bathroom
- Pretty Own Rear West facing 75 ft Garden
- Great Location For Transport Links
- Spacious Kitchen/Dining Room
- EPC Rating - D
- Council Tax Band - D



**For Free Mortgage Quote and Best Mortgage Rates, call Ellisons Mortgage Advisor on 0208 543 1166**



Although these particulars are believed to be correct, their accuracy is not guaranteed and they do not form part of any contract.

**Celebrating 30 years of successful Sales and Lettings in Merton**

