

Hazelwood Avenue Morden, SM4 5RS

£689,950 Freehold

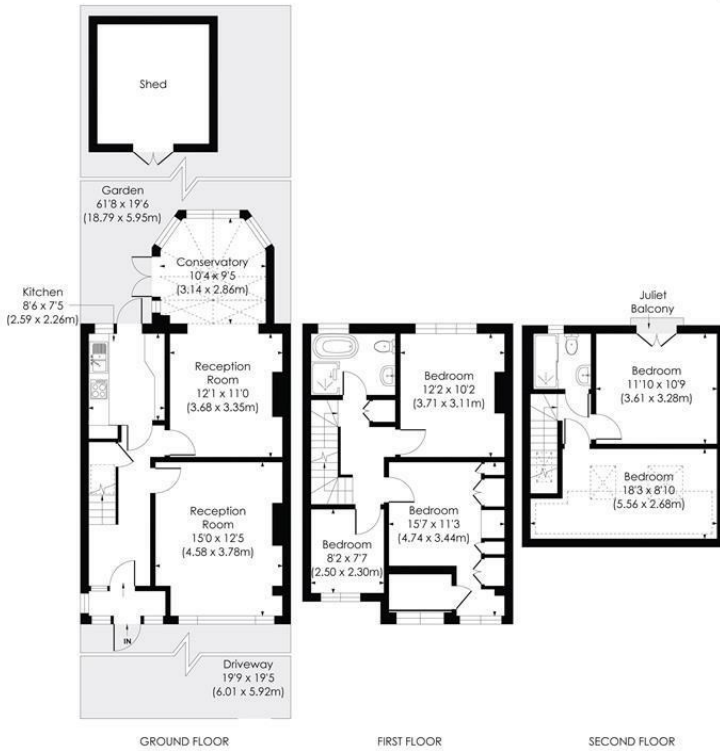


Lovely Five bedroom Two bathroom extended house in central Morden with Off street parking to the front and private garden. Walking distance to the Northern line Tube station and Morden Town centre. This is a superb house for any buyers looking for a home they can move straight into in a very convenient location. Being sold with no onward chain.

HAZELWOOD AVENUE, SM4

Approx. Gross Internal Floor Area

1506 Sq. ft/139.95 Sq. m

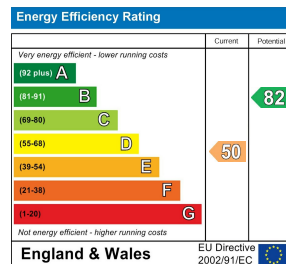


© Pixangle Property Marketing Ltd. info@pixangle.com Tel: 0208 870 2118

pixangle
PROPERTY MARKETING

This floor plan has been prepared for the purpose of illustration only in accordance with the latest RICS code of measuring practice and is not to scale. All measurements and areas are approximate and whilst every effort has been made to ensure the accuracy of the plan contained here, no responsibility is taken for any error, omission or misstatement.

- Five Bedroom House
- Master bedroom with en-suite
- Off Street parking
- Private garden
- No Onward Chain
- Walking distance to Northern line tube station
- EPC Rating E
- Council Tax Band D



For Free Mortgage Quote and Best Mortgage Rates, call Ellisons Mortgage Advisor on 0208 543 1166



Although these particulars are believed to be correct, their accuracy is not guaranteed and they do not form part of any contract.

Celebrating 30 years of successful Sales and Lettings in Merton

