



Canonbury Place

Canonbury, N1

£1,100 per week
(£4,766.67 pcm)

This recently repainted four/five bedroom house of over 1830sqft is arranged over four floors with flexible accommodation throughout and a private rear garden located in the Canonbury conservation area of Islington close to vibrant Upper Street and e

CHESTERTONS



Canonbury Place

Canonbury, N1

- Large four/five bedroom house
- Two/three reception rooms
- Stylish kitchen
- Two modern fitted bathroom suite's
- Private rear garden
- Close to Highbury & Islington station
- Moments from vibrant Upper Street
- Canonbury conservation area



This recently repainted four/five bedroom house of over 1830sqft is arranged over four floors with flexible accommodation throughout and a private rear garden located in the Canonbury conservation area of Islington close to vibrant Upper Street and easy reach of Highbury & Islington station.

The property boasts a stylish, modern fitted kitchen, separate dining room, large separate reception room, four double bedrooms plus a fifth bedroom/study, two modern fitted bathroom suite's, separate reception room and a good sized private rear garden.

Canonbury Place is located in the heart of Canonbury offering easy

Tenure: To be advised

**Furnished, Part Furnished,
Unfurnished**

Additional tenant charges apply (fees apply to non-AST tenancies only)

Tenancy Agreement Fee: £300

References per Tenant/Guarantor: £60

Inventory check (approx. £100 – £250 inc. VAT)

[chestertons.com/property-to-rent/applicable-fees](https://www.chestertons.com/property-to-rent/applicable-fees)

Chestertons Islington Lettings

327-329 Upper Street

London

N1 2XQ

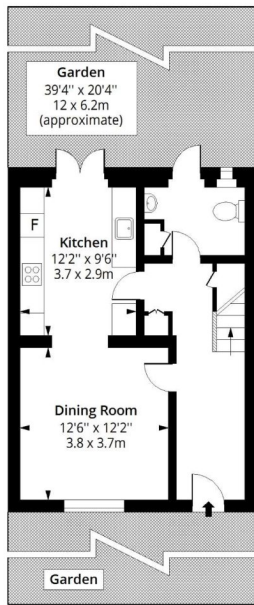
lettings.islington@chestertons.com

02072264221

[chestertons.com](https://www.chestertons.com)

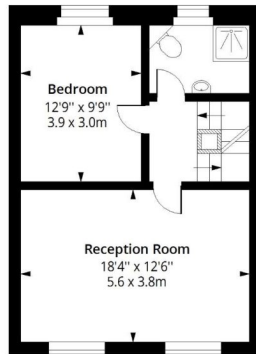
Canonbury Place, N1

Approx. Gross Internal Area 1831 Sq Ft - 170.10 Sq M



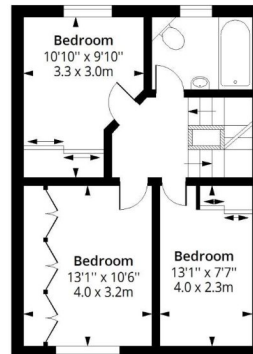
Ground Floor

Floor Area 480 Sq Ft - 44.59 Sq M



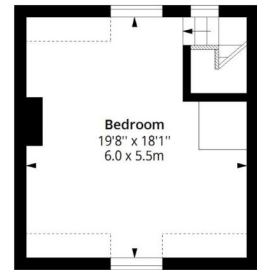
First Floor

Floor Area 493 Sq Ft - 45.80 Sq M



Second Floor

Floor Area 503 Sq Ft - 46.73 Sq M



Third Floor

Floor Area 355 Sq Ft - 32.98 Sq M

Floor plan is for illustrative purposes only and is not to scale. Every attempt has been made to ensure the accuracy of the floor plan shown, however all measurements, fixtures, fittings and data shown are an approximate interpretation for illustrative purposes only.

lpaplus.com

