



Claremont Square

Islington, N1

£360 per week
(£1,560 pcm)

A stylish one bedroom conversion on the second floor of a Victorian building. Comprising; reception with wood floors, open-plan kitchen, bathroom/wc and a double bedroom. Situated less than 5 minutes' walk to Angel Underground Station.



Claremont Square

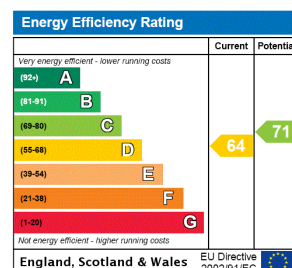
Islington, N1

- Charming One Double Bedroom Flat
- Superb Location
- Open Plan Kitchen and Reception Room
- EPC Rating: D

A stylish one double bedroom conversion set on the second floor of a Victorian building. Comprising a bright reception with wood flooring, open-plan kitchen, bathroom/wc and a double bedroom. Situated within a short walk to Angel Underground Tube Station; available on a furnished basis from 25th June

Tenure: Long Let, Minimum tenancy
Furnished

Additional tenant charges apply
Tenancy Agreement Fee: £222
References per Tenant/Guarantor: £60
Inventory check (approx. £100 – £250 inc. VAT)
[chestertons.com/property-to-rent/applicable-fees](https://www.chestertons.com/property-to-rent/applicable-fees)



Chestertons Islington Lettings

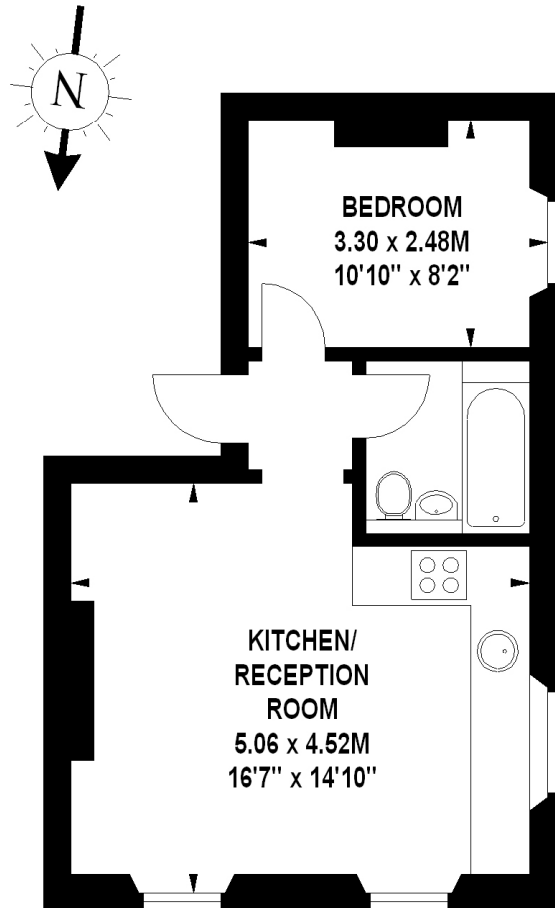
327-329 Upper Street
London
N1 2XQ
lettings.islington@chestertons.com
02072264221
[chestertons.com](https://www.chestertons.com)



Claremont Street, N1

Approximate gross internal area

34.74 sq m / 374 sq ft



Second Floor

The floor plan is not to scale and measurements and areas shown are approximate and therefore should be used for illustrative purposes only.

The plan has been prepared in accordance with the RICS code of Measuring Practice and whilst we have confidence in the information produced, it must not be relied on.

If there is any aspect of particular importance, you should carry out or commission your own inspection of the property.

Copyright of FeaturePRO.