



Camden Road

Camden, N7

£750 per week
(£3,250 pcm)

This stunning three/four double bedroom apartment is situated over the top two floor within this impressive period conversion. The property comprises; reception/fourth bedroom, separate eat in kitchen, three double bedrooms and bathroom suite.



Camden Road

Camden, N7

- 3 Double Bedroom split-level apartment
- Reception, Kitchen & Bathroom
- Moments to Caledonian Road underground
- Reception can be converted into a Bedroom



This stunning three/four double bedroom apartment is situated over the top two floor within this impressive period conversion. The property comprises; reception/fourth bedroom, separate eat in kitchen, three double bedrooms and bathroom suite.

This immaculate and spacious apartment further benefits; solid strip wood flooring, sash windows, spacious accommodation throughout and offers an abundance of natural light.

Camden Road is ideally situated moments away from local amenities and close to excellent transport links into the City.

Tenure: To be advised
Furnished, Part Furnished

Additional tenant charges apply (fees apply to non-AST tenancies only)
 Tenancy Agreement Fee: £300
 References per Tenant/Guarantor: £60
 Inventory check (approx. £100 – £250 inc. VAT)
[chestertons.com/property-to-rent/applicable-fees](https://www.chestertons.com/property-to-rent/applicable-fees)

Energy Efficiency Rating		
	Current	Potential
Very energy efficient - lower running costs		
(92-100) A		
(81-91) B		
(69-80) C		
(55-68) D		
(39-54) E		
(21-38) F	34	44
(1-20) G		
Not energy efficient - higher running costs		
England, Scotland & Wales EU Directive 2002/91/EC		

Chestertons Islington Lettings

327-329 Upper Street
 London
 N1 2XQ
lettings.islington@chestertons.com
 02072264221
[chestertons.com](https://www.chestertons.com)

Camden Road, N7

Approximate gross internal area

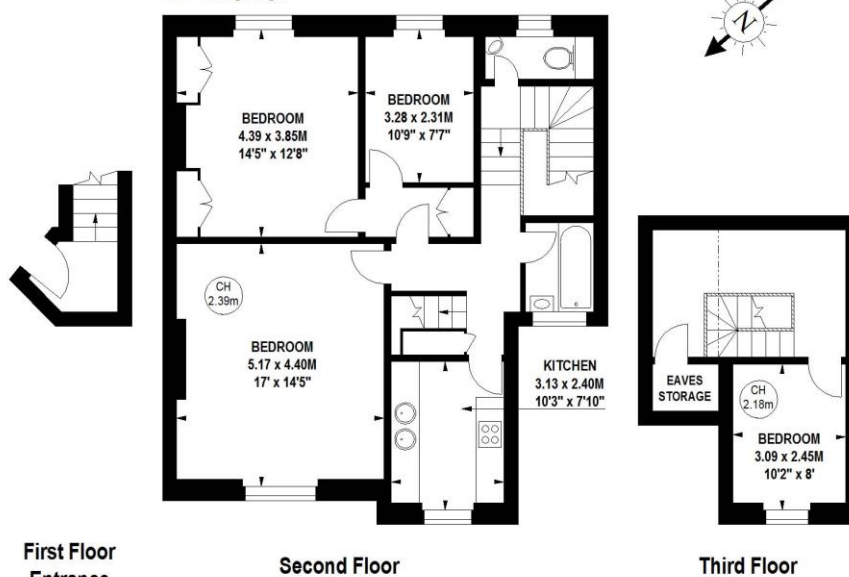
102.65 sq m / 1105 sq ft

(Including Eaves Storage)

Eaves Storage

1.39 sq m / 15 sq ft

Key :
CH - Ceiling Height



The floor plan is not to scale and measurements and areas shown are approximate and therefore should be used for illustrative purposes only. The plan has been prepared in accordance with the RICS code of Measuring Practice and whilst we have confidence in the information produced, it must not be relied on. If there is any aspect of particular importance, you should carry out or commission your own inspection of the property. Copyright of FeaturePRO.

