



Waterfront Mews

London, N1

£495 per week
(£2,145 pcm)

Stunning high specification one bedroom apartment overlooking Regents Canal. This large and well proportioned apartment is set on the top floor of a secure private development and boasts contemporary fixtures and fittings and floor to ceiling windows



Waterfront Mews

London, N1

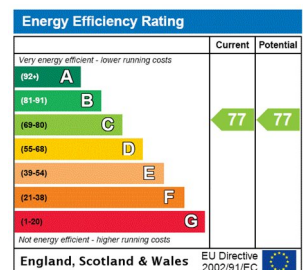
- Large One Bedroom Apartment
- Stunning Views Over the Canal
- High Specification Fixtures and Fittings
- Excellent Location Close to Transport



Stunning high specification c710sqft one bedroom apartment overlooking Regents Canal. This large and well proportioned apartment is set on the top floor of a secure private development and boasts wood flooring, modern fitted kitchen, full suite bathroom, floor to ceiling windows over the canal which concertina open to create a truly unique space with excellent views. Waterfront Mews is a short walk from Islington's Angel (Northern Line) as well as Shoreditch, Old Street (Northern Line) and many other amenities and travel links. Viewing highly recommended.

Tenure: To be advised
Furnished, Part Furnished

Additional tenant charges apply
 Tenancy Agreement Fee: £300
 References per Tenant/Guarantor: £60
 Inventory check (approx. £100 – £250 inc. VAT)
chestertons.com/property-to-rent/applicable-fees

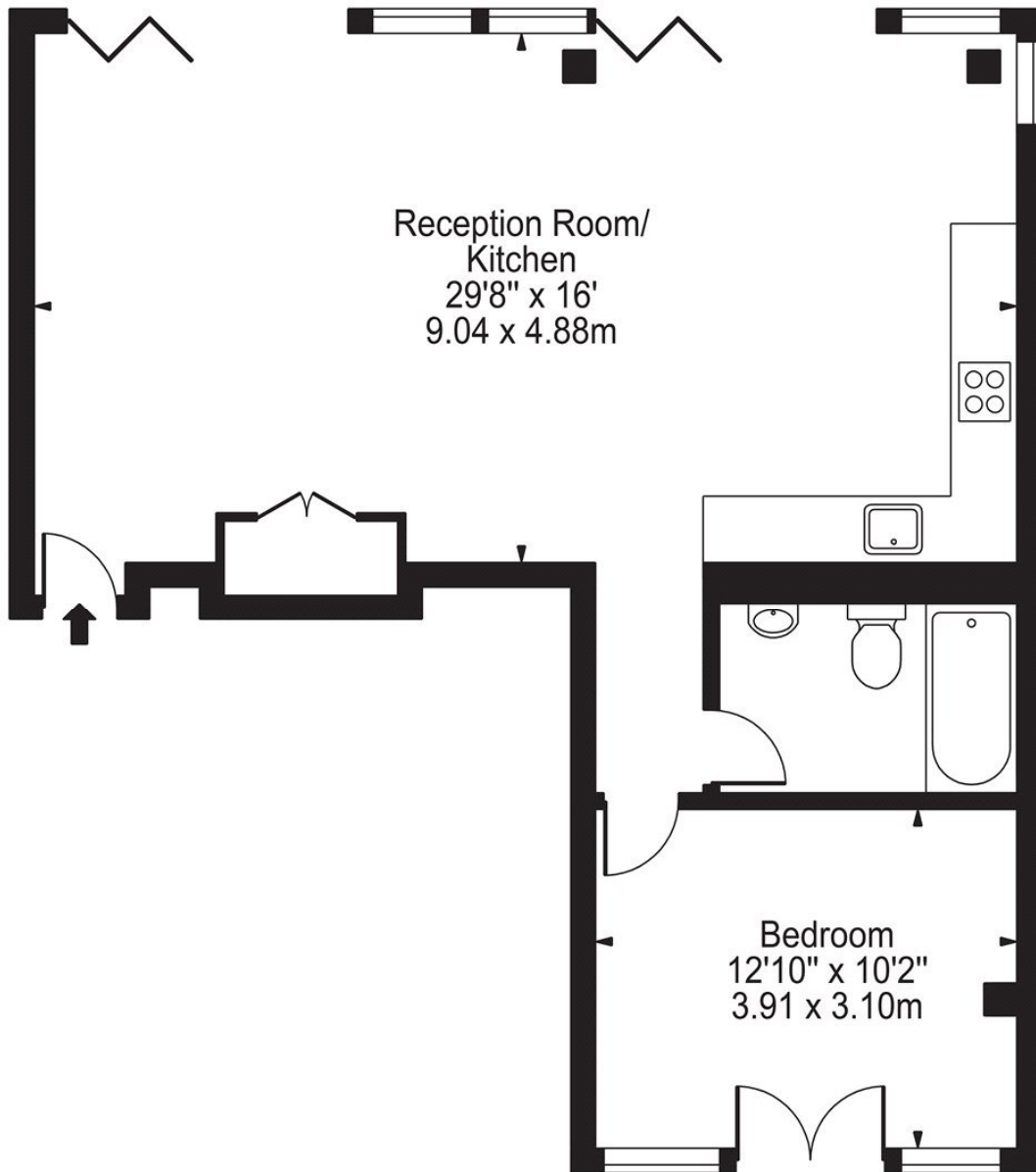


Chestertons Islington Lettings

327-329 Upper Street
 London
 N1 2XQ
lettings.islington@chestertons.com
 02072264221
chestertons.com

Waterfront Mews, N1

Approx. Gross Internal Area 710 Sq Ft - 65.96 Sq M



Second Floor

For Illustration Purposes Only - Not To Scale

This floor plan should be used as a general outline for guidance only and does not constitute in whole or in part an offer or contract. Any intending purchaser or lessee should satisfy themselves by inspection, searches, enquiries and full survey as to the correctness of each statement. Any areas, measurements or distances quoted are approximate and should not be used to value a property or be the basis of any sale or let.