



# Island Apartments

30 Coleman Fields, N1

£395 per week  
(£1,711.67 pcm)

A bright and well-appointed apartment on the first floor of this attractive recently-built block located close to the vibrant Upper Street.



# Island Apartments

30 Coleman Fields, N1

- Large One Bedroom
- Modern
- Wood Floors in Living areas
- Close to Essex Road and Angel Stations, Great Bus Links



A bright and well-appointed apartment on the first floor of this attractive recently-built block located close to the vibrant Upper Street and Angel tube. With wood floors in the living areas, the property comprises a large double bedroom, good-sized lounge with Juliette windows, separate fully fitted kitchen with all appliances, modern bathroom.

Positioned for access to both Essex Road and Angel Stations, along with great bus links to the city.

---

**Tenure:** Long Let

**Furnished**

Additional tenant charges apply  
Tenancy Agreement Fee: £222  
References per Tenant/Guarantor: £60  
Inventory check (approx. £100 – £250 inc. VAT)  
[chestertons.com/property-to-rent/applicable-fees](https://www.chestertons.com/property-to-rent/applicable-fees)

---

### *Chestertons Islington Lettings*

327-329 Upper Street

London

N1 2XQ

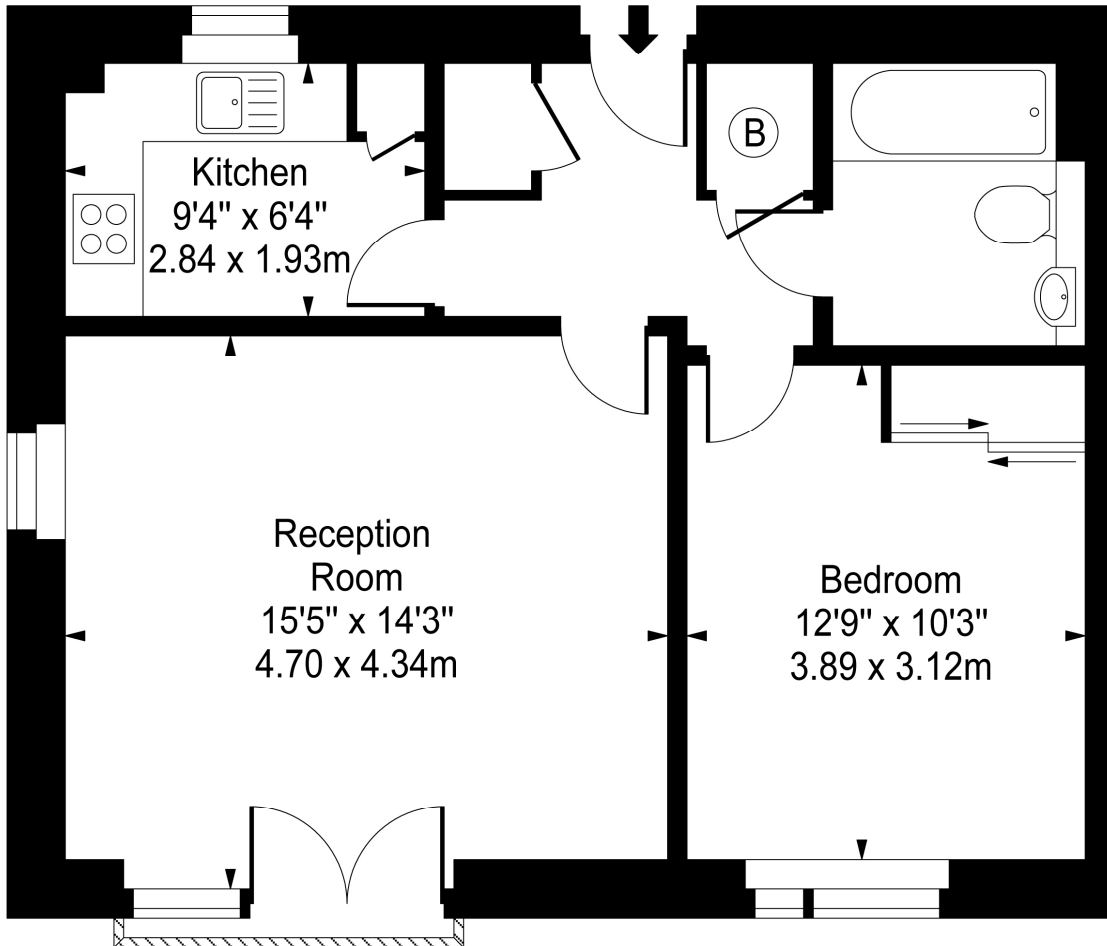
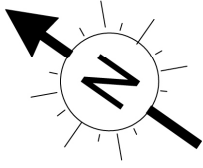
[lettings.islington@chestertons.com](mailto:lettings.islington@chestertons.com)

02072264221

[chestertons.com](https://www.chestertons.com)

A member of  
OnTheMarket.com

# Island Apartments, N1



First Floor

Approx Gross Internal Area **542 Sq Ft - 50.35 Sq M**

For Illustration Purposes Only - Not To Scale

[www.goldlens.co.uk](http://www.goldlens.co.uk)

Ref. No. 006129J