



Providence Place
London, N1

CHESTERTONS
Islington





Finished to an immaculate standard and set within a secure gated development, this large apartment boasts two double bedrooms, two bathrooms (one en-suite), wood flooring, lift access, open plan reception and kitchen with high specification fixtures

- Two Bedroom Apartment
- High Specification Finish Throughout
- Large Balcony
- Wood Flooring
- Secure Gated Development

£675 per week (£2,925 pcm)
 Additional tenant charges apply
 Tenancy Agreement Fee: £222
 References per Tenant/Guarantor: £60
 Inventory check (approx. £100 – £250 inc. VAT)
chestertons.com/property-to-rent/applicable-fees

Energy Efficiency Rating		Current	Potential
Very energy efficient - lower running costs	A		
(95-101)	B		
(89-94)	C	72	72
(82-88)	D		
(75-81)	E		
(69-74)	F		
(63-68)	G		
Less energy efficient - higher running costs			
England, Scotland & Wales		EU Directive 2002/91/EC	

Tenure: Long Let, Minimum term 12 months
Furnished

Chestertons Islington Lettings

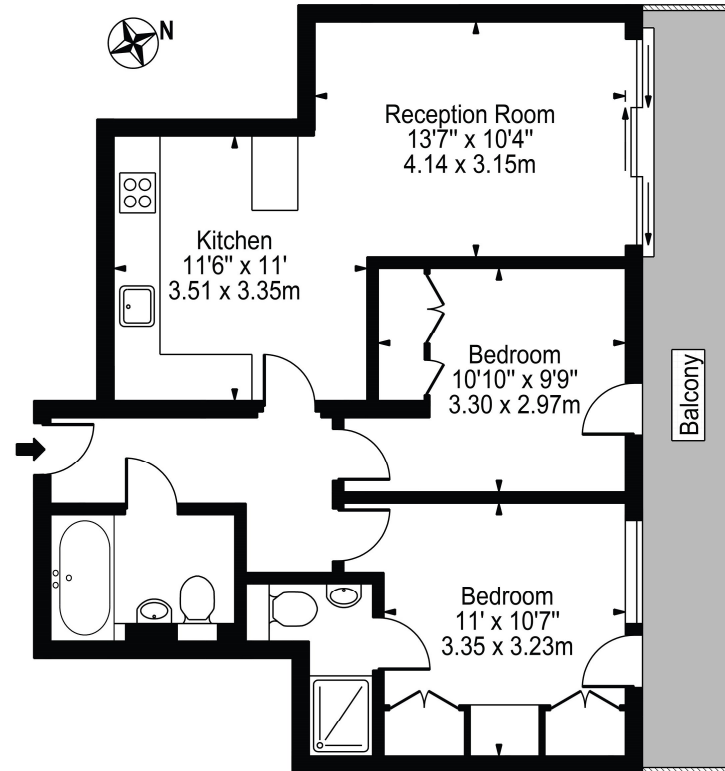
327-329 Upper Street
 London
 N1 2XQ

lettings.islington@chestertons.com
 02072264221
 chestertons.com



Providence Place

Approx. Gross Internal Area 646 Sq Ft - 60.02 Sq M



Third Floor

For Illustration Purposes Only - Not To Scale

This floor plan should be used as a general outline for guidance only and does not constitute in whole or in part an offer or contract. Any intending purchaser or lessee should satisfy themselves by inspection, searches, enquiries and full survey as to the correctness of each statement. Any areas, measurements or distances quoted are approximate and should not be used to value a property or be the basis of any sale or let.