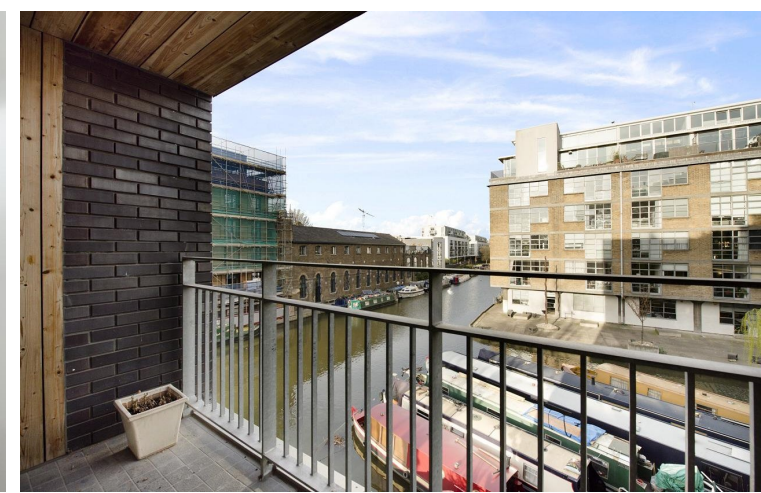
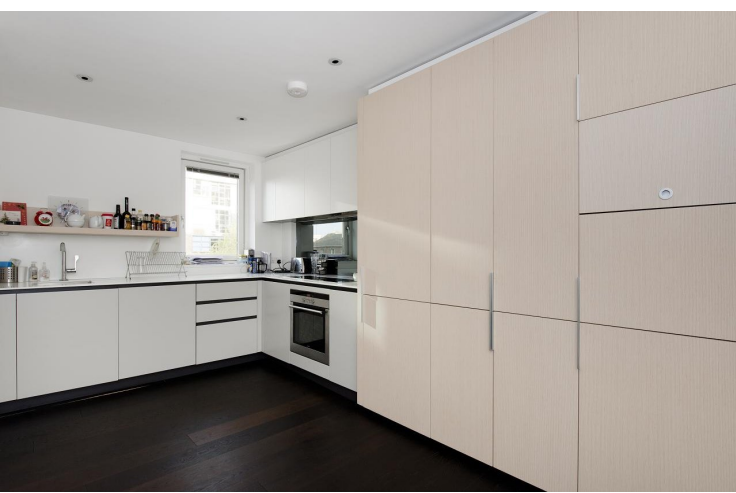




Wenlock Building
56 Wharf Road, N1

CHESTERTONS
Islington





This sensational two double bedroom apartment is situated on the second floor within this highly impressive portered run development overlooking the Canal. The apartment comprises; spacious open plan reception room, two bedrooms and two bathrooms.

- Open Plan Kitchen Reception
- Two Double Bedrooms
- Two Bathrooms
- Private Terrace
- Excellent Location to City

£600 per week (£2,600 pcm)
 Additional tenant charges apply
 Tenancy Agreement Fee: £222
 References per Tenant/Guarantor: £60
 Inventory check (approx. £100 – £250 inc. VAT)
chestertons.com/property-to-rent/applicable-fees

Energy Efficiency Rating		Environmental (CO ₂) Impact Rating	
Current	Potential	Current	Potential
A	A	A	A
B	B	B	B
C	C	C	C
D	D	D	D
E	E	E	E
F	F	F	F
G	G	G	G

EU Directive 2002/91/EC

Tenure: Long Let, Minimum term 12 months
Unfurnished

Chestertons Islington Lettings

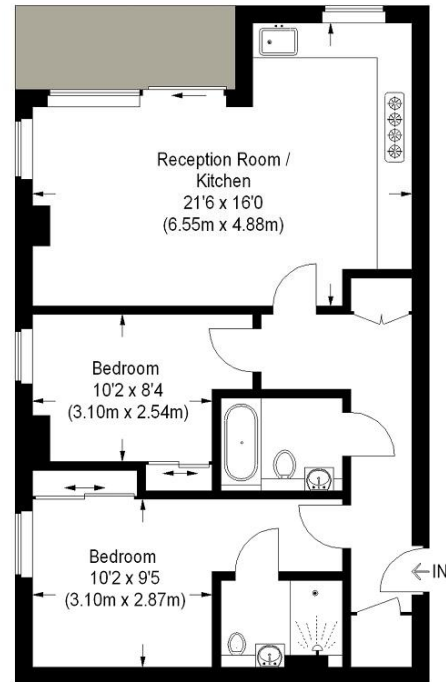
327-329 Upper Street
 London
 N1 2XQ

lettings.islington@chestertons.com
 02072264221
 chestertons.com



Wharf Road, N1

Approximate Gross Internal Area
721 sq ft / 67 sq m



Second Floor = 721 sq ft / 67 sq m

This plan is for layout guidance only. Not drawn to scale unless stated.
Windows and door openings are approximate. Whilst every care is taken
in the preparation of this plan, please check all dimensions, shapes and
compass bearings before making any decisions reliant upon them. (ID 96787)