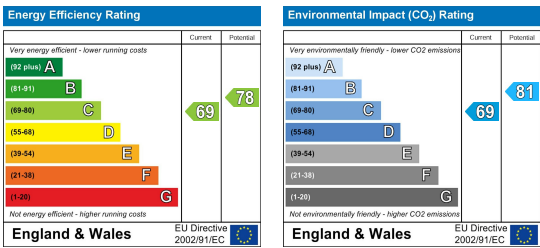


Russell Road
Wimbledon, SW19 1LN

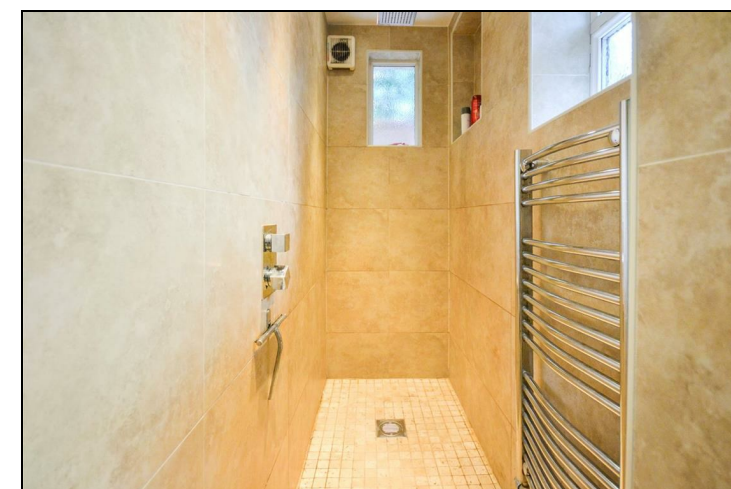
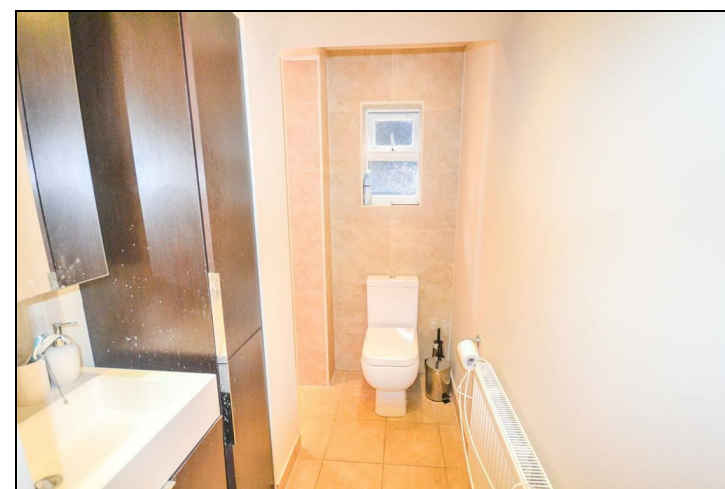
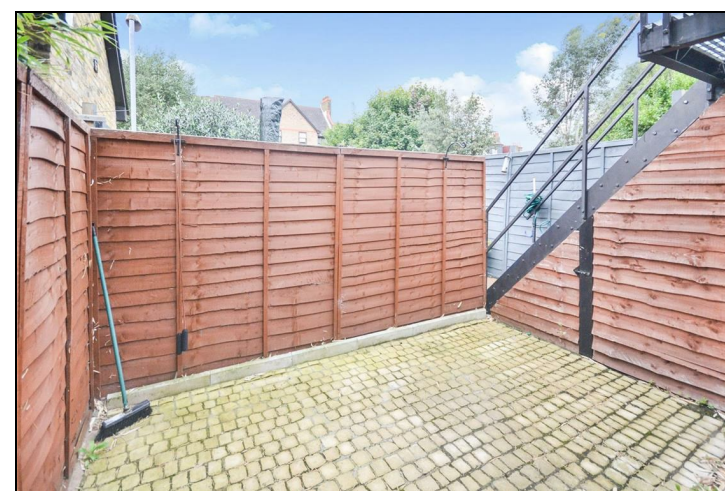


£1,300 Per Month:

ONE BEDROOM GARDEN FLAT CLOSE TO CENTRAL WIMBLEDON



WELL PRESENTED, FURNISHED ground floor period conversion apartment with PRIVATE GARDEN located just moments from Wimbledon Broadway and Station (District Line) and within easy reach of South Wimbledon Tube (Northern Line). The property has a spacious double bedroom with good sized BUILT IN WARDROBES, separate reception room, eat in kitchen and modern bathroom with walk in shower. EPC C.



SPECIFICATION:

- Central Wimbledon location
- Private garden
- Double bedroom with built in storage
- Modern eat in kitchen
- Shower room
- First months rent in advance
- Five weeks security deposit
- No agency fees

