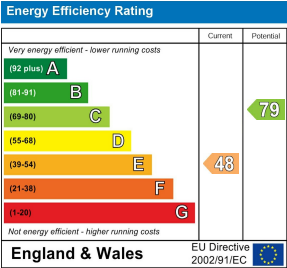
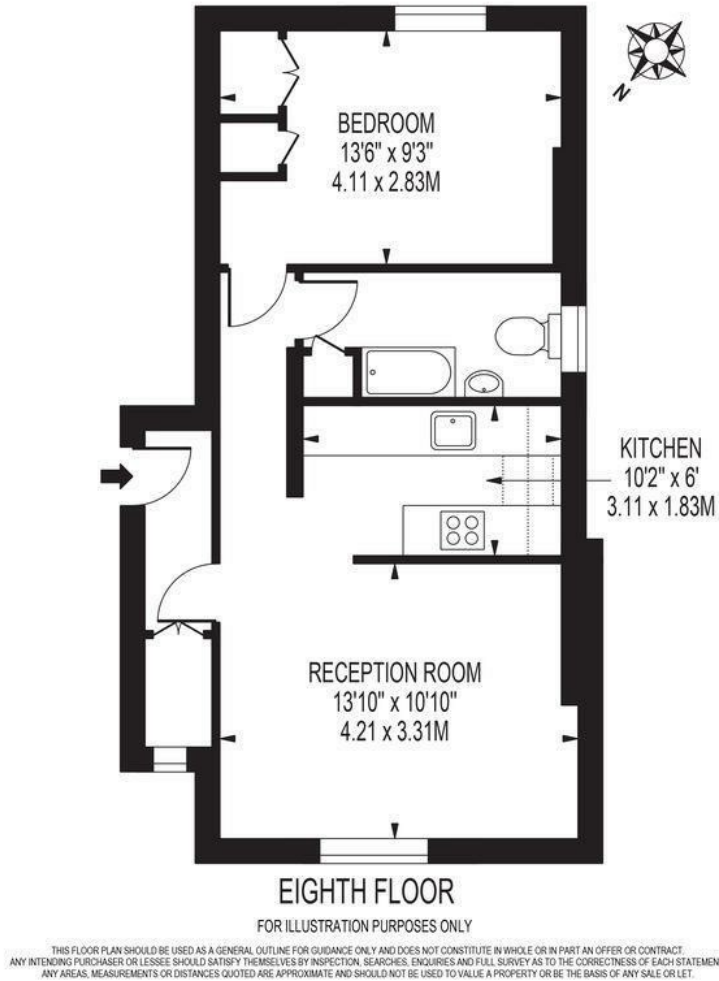


WORPLE ROAD  
APPROXIMATE GROSS INTERNAL FLOOR AREA: 468 SQ FT - 43.51 SQ M



Worple Road  
Wimbledon, SW19 4HZ



£1,450 PCM:

TOP FLOOR ONE BEDROOM CONVERSION FLAT  
0.6 MILES FROM WIMBLEDON STATION/TOWN CENTRE



Top floor ONE BEDROOM CONVERSION flat flat, just 0.6 miles from Wimbledon town centre and station, allowing for easy access to a variety of shops, restaurants, and local amenities, and along local bus routes. Spanning an inviting 468 square feet, the property features a bright reception room, separate kitchen, and spacious double bedroom with FITTED WARDROBES. EPC band E. Council tax band B.



**SPECIFICATION:**

- Top floor one bedroom conversion flat
- Great natural light
- 0.6 miles to Wimbledon station & town centre
- Along bus routes
- Fitted wardrobes
- First months rent in advance
- Five weeks security deposit
- One weeks holding deposit
- EPC band E
- Council tax band B

