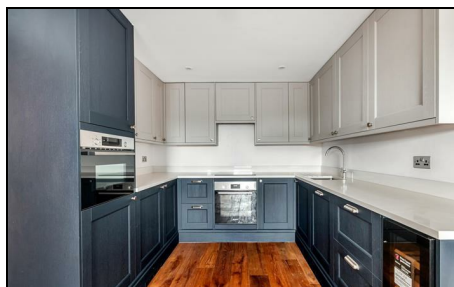
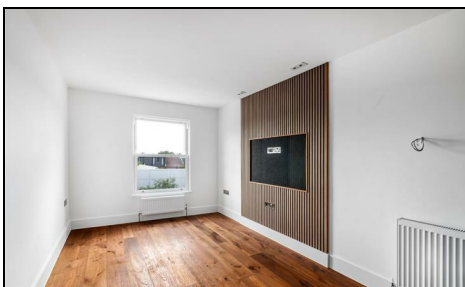


Kingston Road Wimbledon, SW19 1JW

£625,000 Leasehold - Share of Freehold



A superb split level two double bedroom, two bathroom newly developed top floor flat located moments from South Wimbledon and Wimbledon Broadway. Boasting a fantastic finish throughout and offering a buyer an opportunity to purchase a "turn key" home with the share of freehold and access to off street parking all set within one of London's most prestigious postcodes.

Early Viewings Are Highly Recommended To Avoid Disappointment.

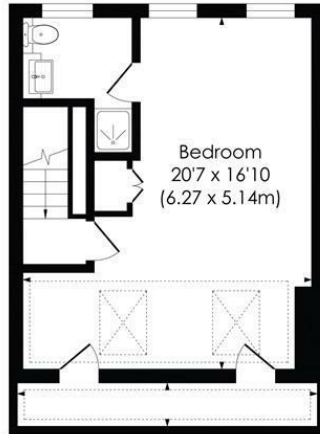
KINGSTON ROAD, SW19

Approx. Gross Internal Floor Area
895 Sq. ft/83.06 Sq. m (Including Reduced Height)



SECOND FLOOR

Kitchen/
Reception Room
24'11 x 9'5
(7.59 x 2.87m)



THIRD FLOOR



pixangle
PROPERTY MARKETING

This floor plan has been prepared for the purpose of illustration only in accordance with the latest RICS code of measuring practice and is not to scale. All measurements and areas are approximate and whilst every effort has been made to ensure the accuracy of the plan contained here, no responsibility is taken for any error, omission or misstatement.

- Brand New Development
- Split Level Apartment
- Two Double Bedrooms
- Spacious Open Plan Kitchen/Lounge
- Two Bathrooms
- Share Of Freehold
- Service Charge - TBC
- Ground Rent - Nil
- Current EPC Rating C
- Council Tax Band - TBC

Energy Efficiency Rating		
	Current	Potential
Very energy efficient - lower running costs		
(92 plus) A		
(81-91) B		
(69-80) C		
(55-68) D		
(39-54) E		
(21-38) F		
(1-20) G		
Not energy efficient - higher running costs		
England & Wales		
EU Directive 2002/91/EC		

For Free Mortgage Quote and Best Mortgage Rates, call an Ellisons Mortgage Advisor on 020 8944 9494



Although these particulars are believed to be correct, their accuracy is not guaranteed and they do not form part of any contract.

Celebrating 30 years
of successful Sales and
Lettings in Merton

