

Florence Road Wimbledon, SW19 8TH

£1,100,000 Freehold



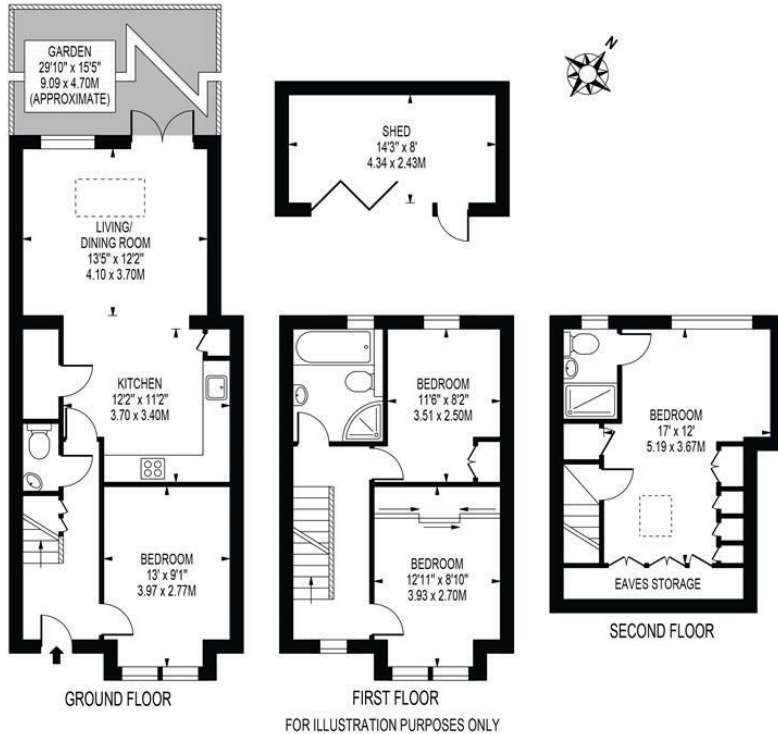
Sold with no onward chain this charming fully extended Victorian house is located in the heart of the desirable South Park Gardens area of Wimbledon. The property boasts three double bedrooms, two bathrooms and has been fully extended to provide ample living space for a growing family. The property also further benefits from having a superb garden room/home office and is situated in an area known for its sought-after local schools and the excellent transport links.

FLORENCE ROAD

APPROXIMATE GROSS INTERNAL FLOOR AREA: 1158 SQ FT - 107.60 SQ M
(INCLUDING EAVES STORAGE & EXCLUDING SHED)

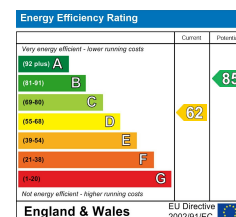
APPROXIMATE GROSS INTERNAL AREA OF EAVES STORAGE: 30 SQ FT - 2.80 SQ M

APPROXIMATE GROSS INTERNAL AREA OF SHED: 114 SQ FT - 10.55 SQ M



THIS FLOOR PLAN SHOULD BE USED AS A GENERAL OUTLINE FOR GUIDANCE ONLY AND DOES NOT CONSTITUTE IN WHOLE OR IN PART AN OFFER OR CONTRACT. ANY INTENDING PURCHASER OR LESSEE SHOULD SATISFY THEMSELVES BY INSPECTION, SEARCHES, ENQUIRIES AND FULL SURVEY AS TO THE CORRECTNESS OF EACH STATEMENT. ANY AREAS, MEASUREMENTS OR DISTANCES QUOTED ARE APPROXIMATE AND SHOULD NOT BE USED TO VALUE A PROPERTY OR BE THE BASIS OF ANY SALE OR LET.

- South Park Gardens
- Fully Extended Victorian Property
- Three Double Bedrooms
- Two Bathrooms
- Home Office/Garden Room
- Excellent Transport Links
- Highly Sought After Local Schools
- Freehold
- EPC Rating D
- Council Tax Band E



For Free Mortgage Quote and Best Mortgage Rates, call an Ellisons Mortgage Advisor on 020 8944 9494



Although these particulars are believed to be correct, their accuracy is not guaranteed and they do not form part of any contract.

Celebrating 30 years of successful Sales and Lettings in Merton

