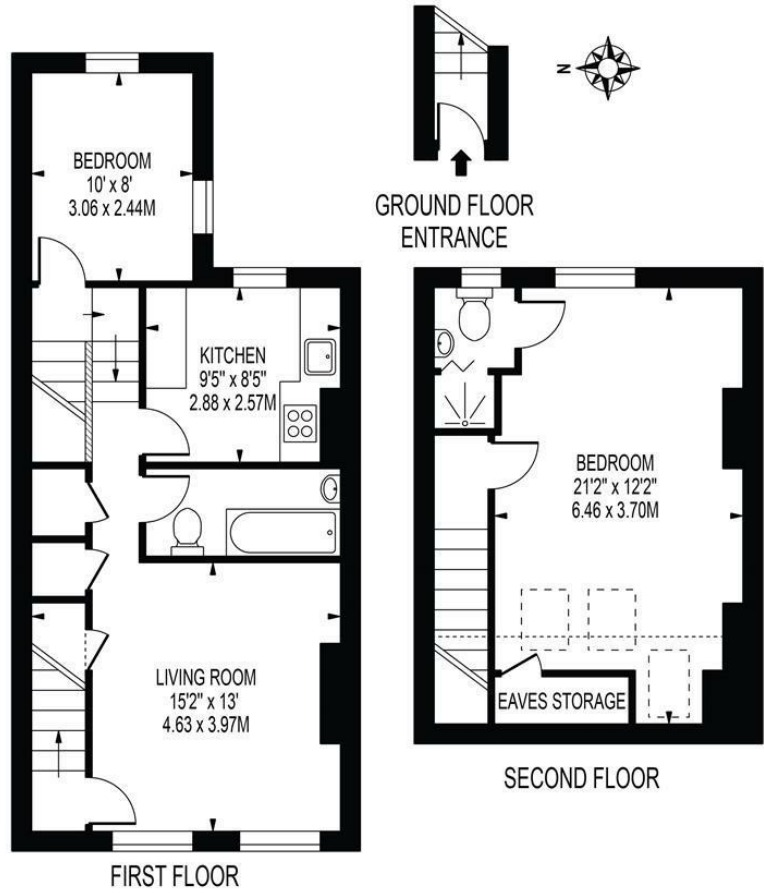
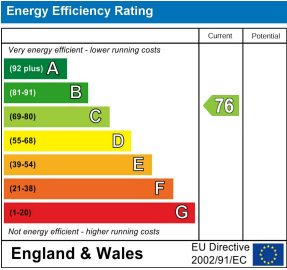


PALMERSTON ROAD  
APPROXIMATE TOTAL INTERNAL FLOOR AREA: 812 SQ FT - 75.43 SQ M  
(INCLUDING EAVES STORAGE & RESTRICTED HEIGHT AREA)  
APPROXIMATE GROSS INTERNAL AREA OF EAVES STORAGE & RESTRICTED HEIGHT: 58 SQ FT - 5.39 SQ M



FOR ILLUSTRATION PURPOSES ONLY  
THIS FLOOR PLAN SHOULD BE USED AS A GENERAL OUTLINE FOR GUIDANCE ONLY AND DOES NOT CONSTITUTE IN WHOLE OR IN PART AN OFFER OR CONTRACT.  
ANY INTENDING PURCHASER OR LESSEE SHOULD SATISFY THEMSELVES BY INSPECTION, SEARCHES, ENQUIRIES AND FULL SURVEY AS TO THE CORRECTNESS OF EACH STATEMENT.  
ANY AREAS, MEASUREMENTS OR DISTANCES QUOTED ARE APPROXIMATE AND SHOULD NOT BE USED TO VALUE A PROPERTY OR BE THE BASIS OF ANY SALE OR LET.



## Palmerston Road London, SW19 1PD



£2,200 PCM:

TWO BED, TWO BATHROOM APARTMENT IN A GREAT LOCATION



A very well presented TWO BEDROOM and TWO BATHROOM split level apartment. The property is BRILLIANTLY located being a short walk to Wimbledon High Street and train station, as well as being within close proximity of South Wimbledon Tube station. On the first floor the property comprises of the first bedroom, SPACIOUS lounge, well kept kitchen and bathroom. Upstairs you will find a FANTASTIC sized bedroom with EN-SUITE bathroom. The property benefits from gas central heating and permit parking is available.  
EPC - C and Council tax band - D



### SPECIFICATION:

- Two Bedrooms
- Two Bathrooms
- Split Level
- Great Location
- Unfurnished
- Holding Deposit = One Weeks Rent
- One Months Rent in Advance
- Five Weeks Security Deposit
- EPC - C
- Council Tax Band - D

