

Florence Road Wimbledon, SW19 8TN

£750,000 Freehold

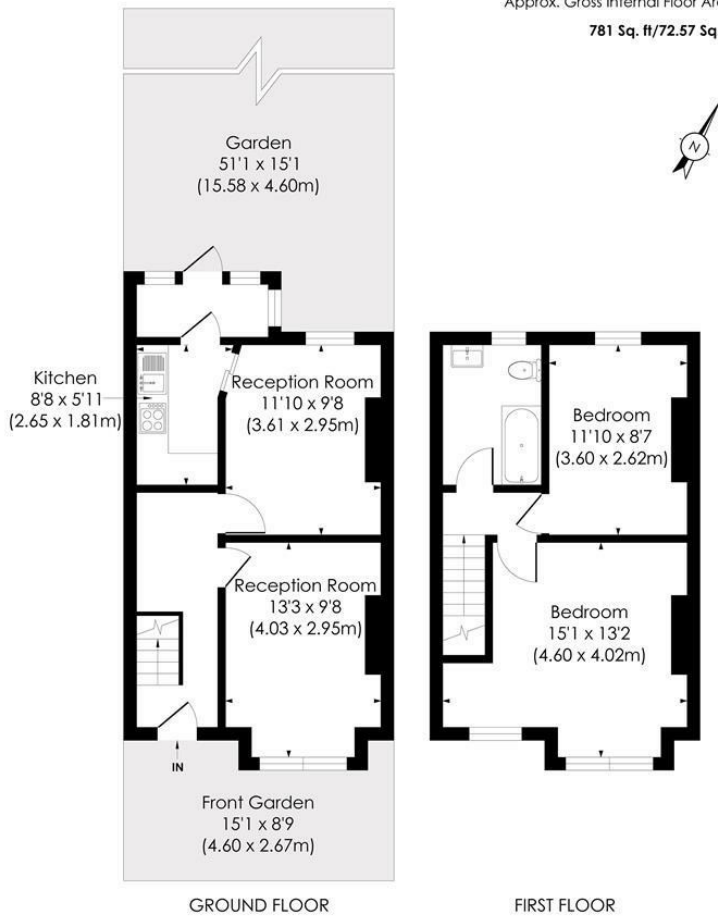


Two double bedroom, end terrace Victorian home with a wider than average plot and a South-facing garden. In need of modernisation offers superb extension potential both on the ground floor and in to the loft (subject to the usual consents) this unique property also has the benefit of no onward chain. Occupying a favourable position on the road in South Park Gardens, close to Wimbledon Town Centre and Station. Properties of this potential are a rare find in South Park Gardens so an early viewing is highly recommended.

FLORENCE ROAD, SW19

Approx. Gross Internal Floor Area

781 Sq. ft/72.57 Sq. m

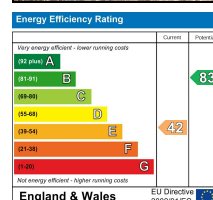


© Pixangle Property Marketing Ltd. info@pixangle.com Tel: 0208 870 2118

pixangle
PROPERTY MARKETING

This floor plan has been prepared for the purpose of illustration only in accordance with the latest RICS code of measuring practice and is not to scale. All measurements and areas are approximate and whilst every effort has been made to ensure the accuracy of the plan contained here, no responsibility is taken for any error, omission or misstatement.

- End Of Terrace Victorian House
- Two Bedrooms
- Two Reception Rooms
- South Facing Garden
- Potential To Extend (STPP)
- Sought After Location
- Full Renovation Needed
- Freehold
- EPC Rating E
- Council Tax Band E



For Free Mortgage Quote and Best Mortgage Rates, call an Ellisons Mortgage Advisor on 020 8944 9494



Although these particulars are believed to be correct, their accuracy is not guaranteed and they do not form part of any contract.

**Celebrating 30 years
of successful Sales and
Lettings in Merton**

