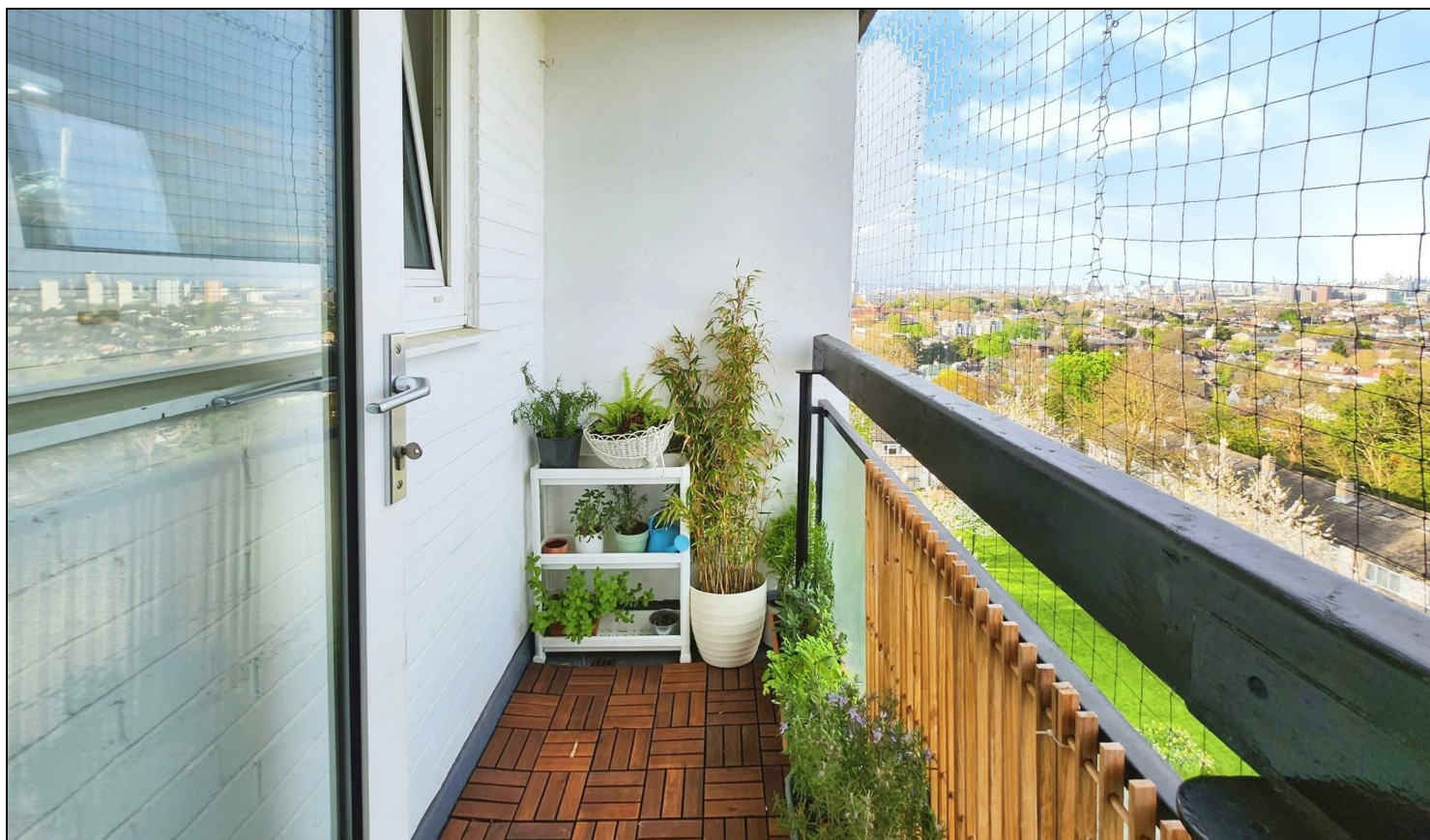
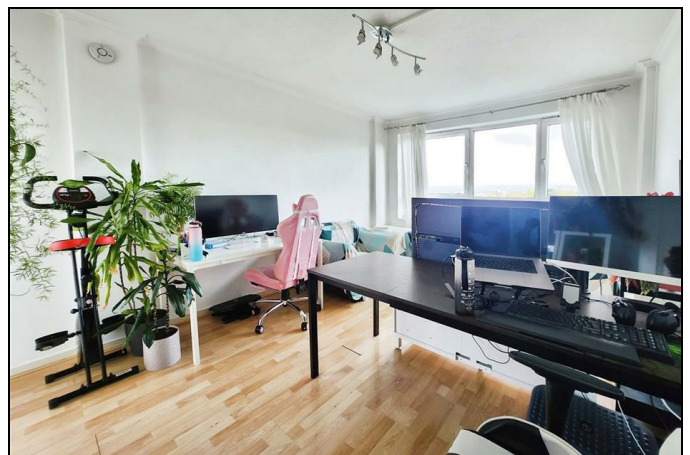


## Whitlock Drive Southfields, SW19 6SL

**£1,800 PCM**



SPACIOUS TWO DOUBLE BEDROOM purpose built flat with PRIVATE BALCONY with STUNNING VIEWS OVER LONDON. Situated in Southfields, on the 6th floor with lift access. Comprises of two double bedrooms, a bathroom, large living room, private balcony, double glazing, lift access and great value council tax (Approx £854 a year).  
EPC C. Council Tax Band C (Wandsworth)



- 6th Floor Flat
- Two Double Bedrooms
- Private Balcony
- Part Furnished
- Wandsworth Council Tax
- One Months Advance Rent
- Five Weeks Deposit
- Holding Deposit = One Weeks Rent
- EPC C
- Council Tax Band C

Energy Efficiency Rating		
	Current	Potential
Very energy efficient - lower running costs		
(92 plus) <b>A</b>		
(81-91) <b>B</b>		
(69-80) <b>C</b>		
(55-68) <b>D</b>		
(39-54) <b>E</b>		
(21-38) <b>F</b>		
(1-20) <b>G</b>		
Not energy efficient - higher running costs		
England & Wales <small>EU Directive 2002/91/EC</small>		