

## Sunlight Close Wimbledon, SW19 8TG

**£695,000 Freehold**

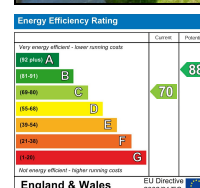
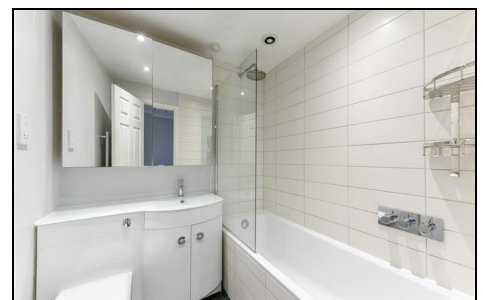
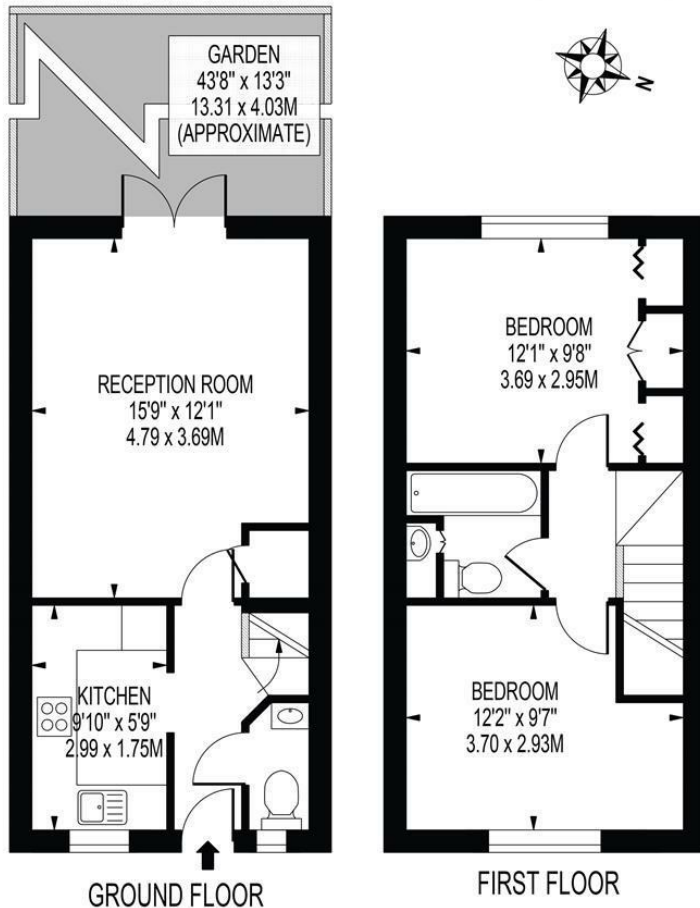


This stunning two double bedroom terraced family home has been refurbished to a high standard throughout. It is situated in a quiet cul-de-sac in the sought-after South Park Gardens area, walking distance to Wimbledon Town, and close to tube Stations both Northern & District Line, alongside excellent schools and nearby amenities. On the ground floor, there is a kitchen with integrated appliances, a modern W/C, and a spacious lounge with doors leading to a low-maintenance, landscaped garden. Upstairs, two double bedrooms and a newly fitted bathroom. The property also benefits from off-street parking for two cars. As houses of this style are rare in this location, early viewing is recommended to avoid disappointment.



## SUNLIGHT CLOSE

APPROXIMATE GROSS INTERNAL FLOOR AREA: 629 SQ FT - 58.46 SQ M



- Two Double Bedrooms
- South Park Gardens Location
- Perfect Starter House
- Potential to Extend (STPP)
- Off Street Parking For Two Cars
- Private Garden
- Close To Wimbledon Town & Stations
- Freehold
- Council Tax Band E
- EPC Rating C

For Free Mortgage Quote and Best Mortgage Rates, call an Ellisons Mortgage Advisor on 020 8944 9494



Although these particulars are believed to be correct, their accuracy is not guaranteed and they do not form part of any contract.

**Celebrating 30 years  
of successful Sales and  
Lettings in Merton**

