

Effra Road Wimbledon, SW19 8PR

£1,350,000 Freehold

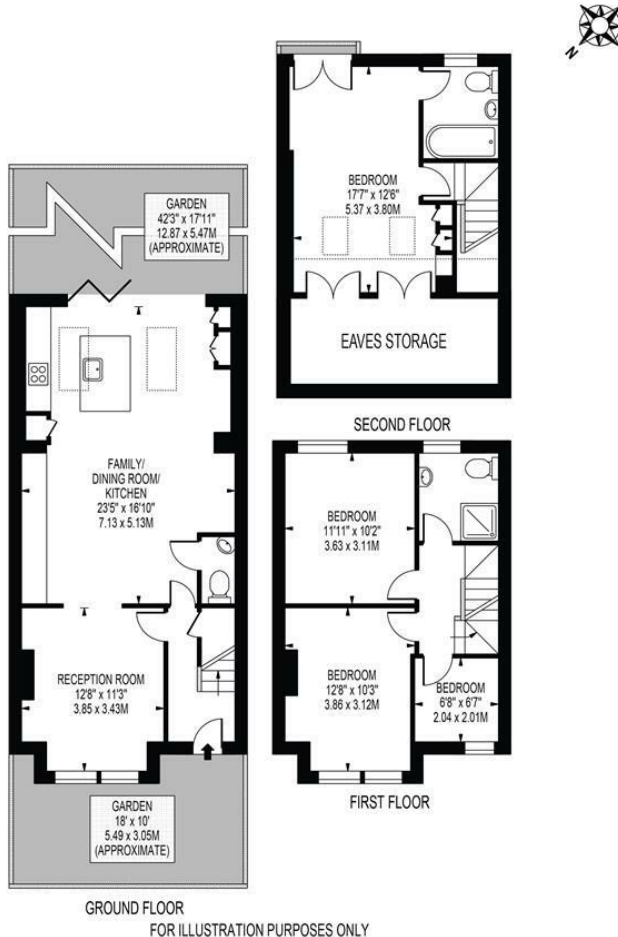


A stunning four bedroom end of terrace Victorian house situated in the heart of South Park Gardens having been extensively refurbished throughout and boasting over 1400 sq/ft of living space, a southern aspect rear garden and sold with no onward chain. Located within a short walk of Wimbledon High Street and Station and benefitting from being within highly sought after local school catchment areas. An early viewing is highly recommended to avoid disappointment.

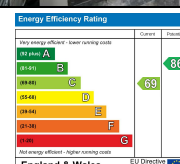
EFFRA ROAD

APPROXIMATE TOTAL INTERNAL FLOOR AREA: 1400 SQ FT - 130 SQ M
(INCLUDING RESTRICTED HEIGHT AREA & EAVES STORAGE)

APPROXIMATE GROSS INTERNAL FLOOR AREA OF RESTRICTED HEIGHT & EAVES STORAGE: 173 SQ FT - 16.1 SQ M



- Victorian End Of Terrace
- South Park Gardens Location
- Ofstead Rated "Outstanding" Schools
- Southern Aspect Rear Garden
- Fully Refurbished and Extended
- Four Bedrooms
- Two Bathrooms
- Freehold
- EPC Rating C
- Council Tax Band F



For Free Mortgage Quote and Best Mortgage Rates, call an Ellisons Mortgage Advisor on 020 8944 9494



Although these particulars are believed to be correct, their accuracy is not guaranteed and they do not form part of any contract.

Celebrating 30 years of successful Sales and Lettings in Merton

