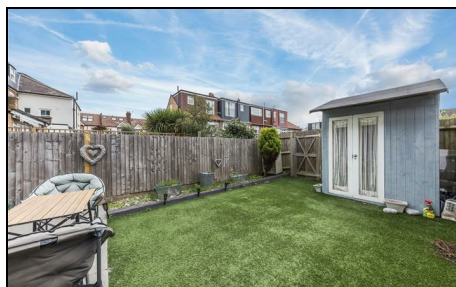


Faraday Road Wimbledon, SW19 8PA

£1,050,000 Freehold

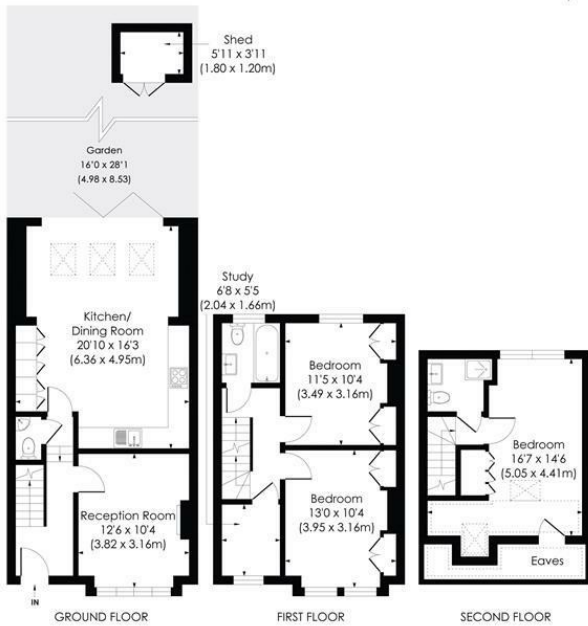


Offered with no onward chain this four bedroom, two bathroom, Victorian terraced house with South facing garden is situated in the highly sought after South Park Gardens area of Wimbledon. Situated on this desirable tree-lined street, the property is within close proximity to the highly sought-after Holy Trinity School as well as numerous transport links including Wimbledon Mainline, District Line Tube, Haydons Road, Thameslink and South Wimbledon Northern line tube.

FARADAY ROAD, SW19

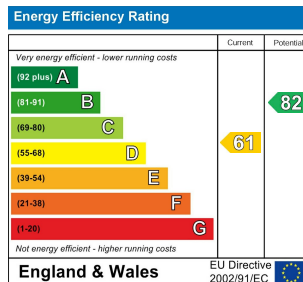
Approx. Gross Internal Floor Area

1157 Sq. ft/107.46 Sq. m
(Including eaves)



© Pixangle Property Marketing Ltd. info@pixangle.com Tel: 0208 870 2118
This floor plan has been prepared for the purpose of illustration only in accordance with the latest RICS code of measuring practice and is not to scale. All measurements and areas are approximate and whilst every effort has been made to ensure the accuracy of the plan contained here, no responsibility is taken for any error, omission or misstatement.

- Period Terraced House
- 4 Bedrooms & 2 Bath/Shower rooms
- Large Kitchen Diner
- Bi folding doors to a south facing garden
- Spacious Reception Room
- Period Features & Sash Windows
- No Onward Chain
- Freehold
- EPC Rating - D
- Council Tax Band E



For Free Mortgage Quote and Best Mortgage Rates, call an Ellisons Mortgage Advisor on 020 8944 9494



Although these particulars are believed to be correct, their accuracy is not guaranteed and they do not form part of any contract.

Celebrating 30 years of successful Sales and Lettings in Merton

