

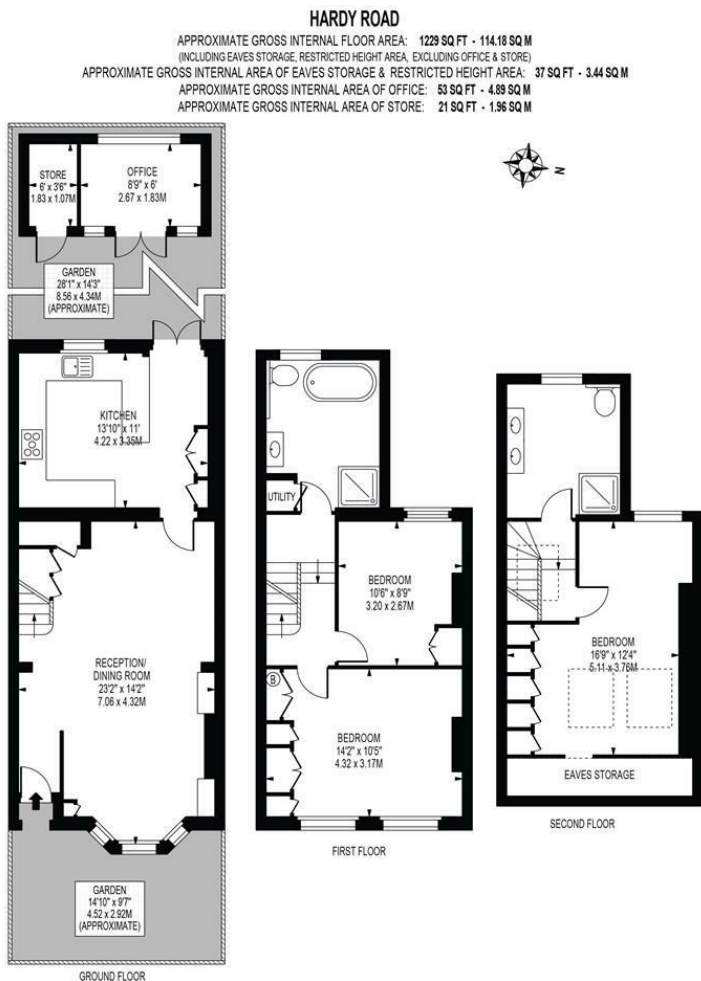
Hardy Road Wimbledon, SW19 1JA

Offers In Excess Of £1,100,000 Freehold

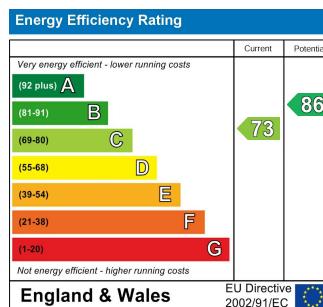


VIEWINGS COMMENCE ON SATURDAY 1st FEBRUARY

Situated in the heart of the highly desirable "Battles" area of Wimbledon and spanning an impressive 1,229 square feet, the property boasts three spacious double bedrooms, two recently upgraded luxurious bathroom suites and a stunning through reception room as well as a fantastic fitted kitchen featuring exquisite quartz worktops that provide both style and functionality. The west-facing rear garden allows for plenty of natural light throughout the day. Additionally, the garden features a charming pagoda and a modern garden room that can serve as a study or a peaceful space to unwind.



- Fully Extended Victorian Terraced House
- "Battles" Area Of Wimbledon
- Three Double Bedrooms
- Luxurious Bathroom Suites
- Garden Room / Study
- Sought After Local Schools
- Fantastic Transport Links
- Freehold
- Current EPC Rating - C
- Council Tax Band - E



For Free Mortgage Quote and Best Mortgage Rates, call an Ellisons Mortgage Advisor on 020 8944 9494



Although these particulars are believed to be correct, their accuracy is not guaranteed and they do not form part of any contract.

Celebrating 30 years of successful Sales and Lettings in Merton

