

Florence Road Wimbledon, SW19 8TH

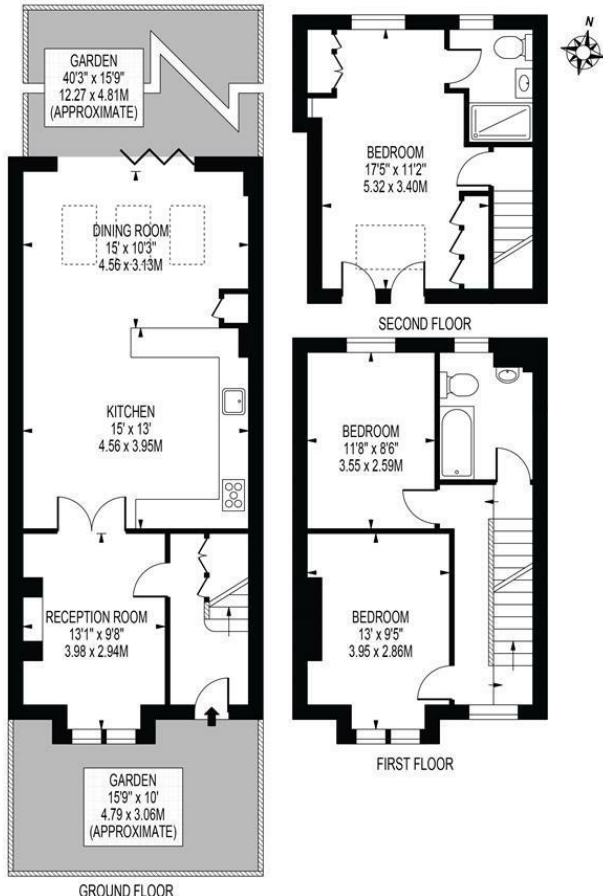
£1,125,000 Freehold



Sold with no onward chain this well presented and fully extended three double bedroom Victorian terraced house occupies a fantastic position within the sought after South Park Gardens area of Wimbledon. With a bright and spacious open plan layout to the ground floor the dining room boasts bi-fold doors leading to a recently redeveloped, low-maintenance garden. Upstairs there are two double bedrooms and family bathroom with the principal bedroom and en suite shower room located in the converted loft. Early viewings are highly recommended.

FLORENCE ROAD

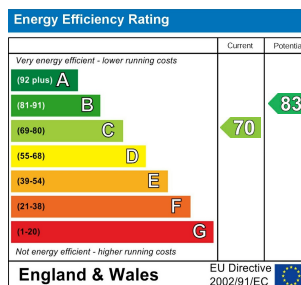
APPROXIMATE GROSS INTERNAL FLOOR AREA: 1160 SQ FT - 107.78 SQ M



FOR ILLUSTRATION PURPOSES ONLY

THIS FLOOR PLAN SHOULD BE USED AS A GENERAL OUTLINE FOR GUIDANCE ONLY AND DOES NOT CONSTITUTE IN WHOLE OR IN PART AN OFFER OR CONTRACT. ANY INTENDING PURCHASER OR LESSEE SHOULD SATISFY THEMSELVES BY INSPECTION, SEARCHES, ENQUIRIES AND FULL SURVEY AS TO THE CORRECTNESS OF EACH STATEMENT. ANY AREAS, MEASUREMENTS OR DISTANCES QUOTED ARE APPROXIMATE AND SHOULD NOT BE USED TO VALUE A PROPERTY OR BE THE BASIS OF ANY SALE OR LET.

- Victorian Terraced House
- South Park Gardens Location
- Three Double Bedrooms
- Two Bathrooms
- Ofsted "Outstanding" Local Schools
- Excellent Transport Links
- No Onward Chain
- Freehold
- EPC Rating C
- Council Tax Band F



For Free Mortgage Quote and Best Mortgage Rates, call an Ellisons Mortgage Advisor on 020 8944 9494



Although these particulars are believed to be correct, their accuracy is not guaranteed and they do not form part of any contract.

Celebrating 30 years of successful Sales and Lettings in Merton

