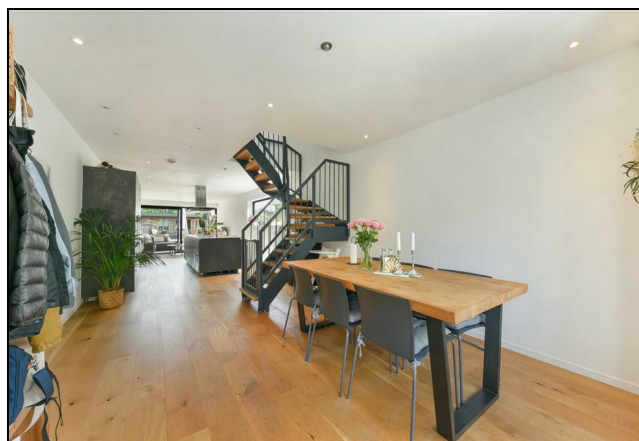
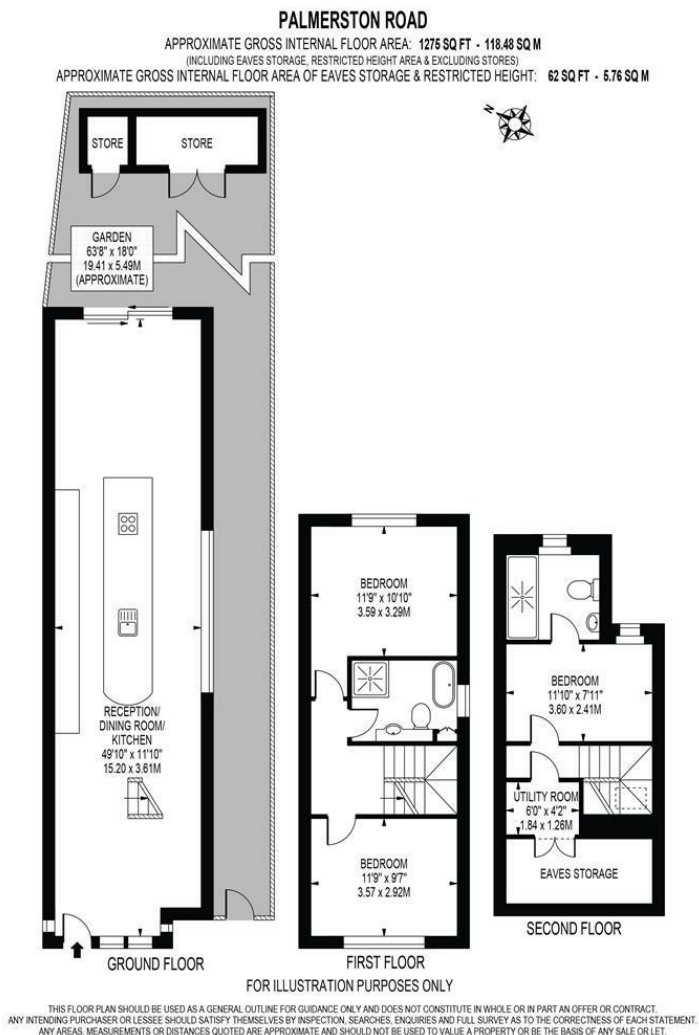


**56 Palmerston Road
Wimbledon, SW19 1PQ**

£1,080,000 Freehold



A superbly presented three bedroom End of Terrace contemporary family home in the Ministers are of Wimbledon, offered to the market with no onward chain and in stunning condition. Modernised and extended by the current owners, boasting a full length open-plan layout downstairs with a bespoke fitted kitchen with integrated appliances and underfloor heating throughout. Bi-fold doors open out onto a 64 ft rear garden with the added benefit of side access and a summerhouse, equipped with both heating and Ethernet. Two double bedrooms and a four piece family bathroom are situated on the first floor, with the principal bedroom plus ensuite in the converted loft. Loxone smart home technology controls heating and lighting on all floors. Enviably positioned a stone's throw away from Wimbledon High Street, within walking distance to both the Mainline and Northern Line as well as excellent local Primary Schools. CHAIN FREE.



- Three Bedroom End of Terrace Family Home
- In Excellent Condition Throughout
- Full Open-Plan Layout
- Modern Integrated Kitchen and Premium Finish
- 64 ft Garden and Equipped Summerhouse
- Close Proximity to Multiple Transport Links & Excellent Primary Schools
- No Onward Chain
- Freehold
- EPC Rating C
- Council Tax Band E

Energy Efficiency Rating		
	Current	Potential
Very energy efficient - lower running costs		
(92 plus) A		
(81-91) B		
(69-80) C		
(55-68) D		
(39-54) E		
(21-38) F		
(1-20) G		
Not energy efficient - higher running costs		
England & Wales		
	71	84
	EU Directive 2002/91/EC	

For Free Mortgage Quote and Best Mortgage Rates, call an Ellisons Mortgage Advisor on 020 8944 9494