

Norman Road Wimbledon, SW19 1BW

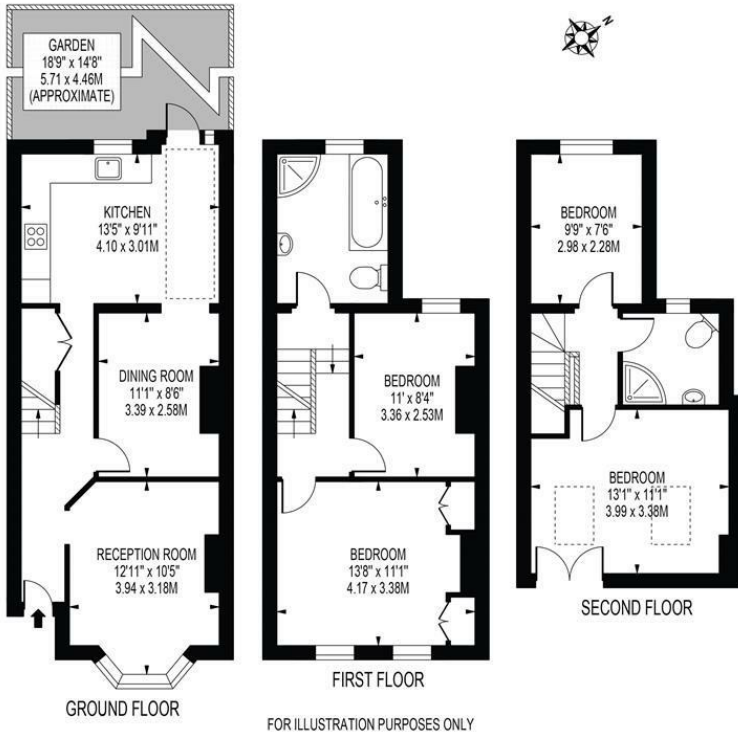
£895,000 Freehold



A wonderful four bedroom Victorian Terraced house having been carefully maintained by the current owner with a cosy lounge, separate dining room and large kitchen breakfast room with doors leading out to a well maintained rear garden. The property benefits from being tucked away on a quiet residential road within easy reach of excellent transport links, sought after local schools and numerous amenities. Early Viewings Highly Recommended.

NORMAN ROAD

APPROXIMATE GROSS INTERNAL FLOOR AREA: 1152 SQ FT - 107.05 SQ M



- Fully Extended Victorian Terraced House
- Four Bedrooms
- Two Bathrooms
- No Onward Chain
- Superb Transport Links
- Sought After Local Schools
- Within Walking Distance Of Merton Abbey Mills
- Freehold
- EPC Rating C
- Council Tax Band D

Energy Efficiency Rating		Current	Potential
Very energy efficient - lower running costs			
(92 plus)	A		85
(81-91)	B		
(69-80)	C	70	
(55-68)	D		
(39-54)	E		
(21-38)	F		
(1-20)	G		
Not energy efficient - higher running costs			
England & Wales		EU Directive 2002/91/EC	

For Free Mortgage Quote and Best Mortgage Rates, call an Ellisons Mortgage Advisor on 020 8944 9494



Although these particulars are believed to be correct, their accuracy is not guaranteed and they do not form part of any contract.

Celebrating 30 years of successful Sales and Lettings in Merton

