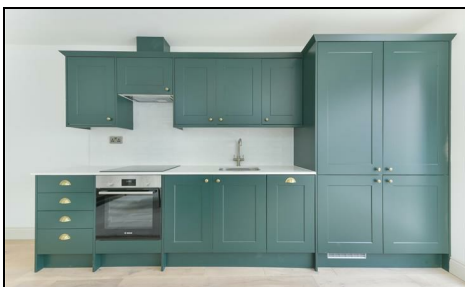


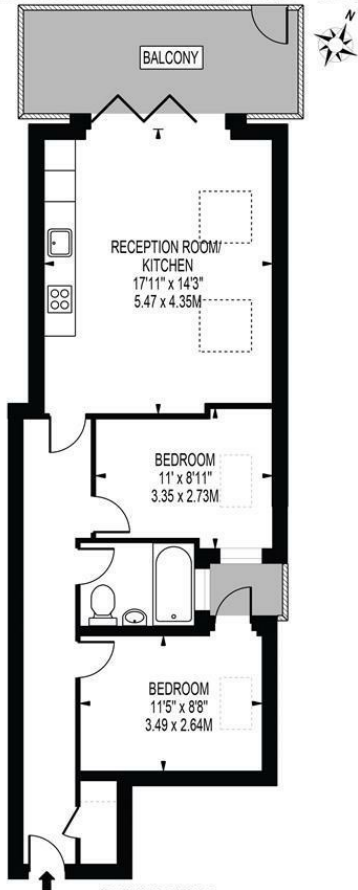
Quicks Road Wimbledon, SW19 1EX

£535,000 Leasehold



A wonderful two double bedroom ground floor flat with private patio garden nestled between the favourable Battles and South Park Gardens Area's of Wimbledon. Boasting a high-end finish throughout with Arezzo brushed brass bathroom fittings, Corston Antique Brass lighting and antique brass finished ironmongery, sockets and switches throughout. The stylish open plan kitchen is fully fitted with a Bosch oven and hob, slimline dishwasher and integrated washer/dryers, complemented by engineered oak flooring throughout. Offered with no onward chain and the additional benefit of a 10 year New Build "Buildzone" structural warranty providing peace of mind for a new owner.

QUICKS ROAD
 APPROXIMATE GROSS INTERNAL FLOOR AREA: 616 SQ FT - 57.22 SQ M



THIS FLOOR PLAN SHOULD BE USED AS A GENERAL OUTLINE FOR GUIDANCE ONLY AND DOES NOT CONSTITUTE IN WHOLE OR IN PART AN OFFER OR CONTRACT. ANY INTENDING PURCHASER OR LESSEE SHOULD SATISFY THEMSELVES BY INSPECTION, SEARCHES, ENQUIRIES AND FULL SURVEY AS TO THE CORRECTNESS OF EACH STATEMENT. ANY AREAS, MEASUREMENTS OR DISTANCES QUOTED ARE APPROXIMATE AND SHOULD NOT BE USED TO VALUE A PROPERTY OR BE THE BASIS OF ANY SALE OR LET.



- New Build - No Onward Chain
- Open-Plan Living
- Superb High End Finish
- Integrated Kitchen
- Two Double Bedroom
- Private Patio Garden
- Stunning Bathroom Room
- New 125 Year Lease
- EPC Rating C
- Council Tax Band C

Energy Efficiency Rating		Current	Potential
Very energy efficient - lower running costs			
(92 plus)	A		
(81-91)	B		
(69-80)	C	73	73
(55-68)	D		
(39-54)	E		
(21-38)	F		
(1-20)	G		
Not energy efficient - higher running costs			
England & Wales		EU Directive 2002/91/EC	

For Free Mortgage Quote and Best Mortgage Rates, call an Ellisons Mortgage Advisor on 020 8944 9494



Although these particulars are believed to be correct, their accuracy is not guaranteed and they do not form part of any contract.

Celebrating 30 years of successful Sales and Lettings in Merton

