

Mount Road Wimbledon Park, SW19 8ET

£2,250

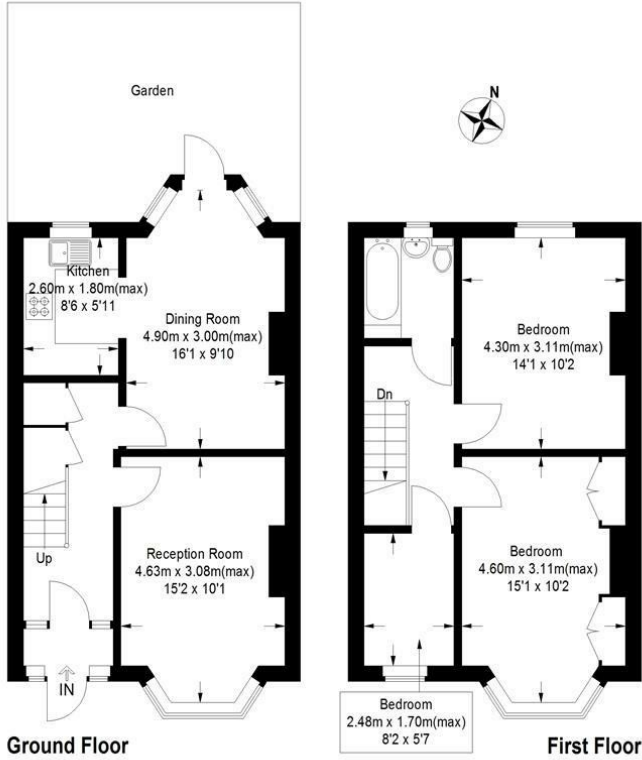


**** PETS CONSIDERED **** Three bedroom end of terrace house, conveniently located close to WIMBLEDON PARK AND RIVERSDALE PRIMARY SCHOOLS, and WITHIN 10 MINUTES WALK OF BOTH EARLSFIELD AND WIMBLEDON PARK stations and amenities. Consists of front reception room, open plan kitchen/diner, two double bedrooms, one single and family bathroom. Good size rear garden astroturf and shed.

EPC band D. Merton Council tax band E.

Mount Road, SW19

Approximate Gross Internal Area
 Ground Floor = 43.0 sq m / 463 sq ft
 First Floor = 41.3 sq m / 444 sq ft
 Total = 84.3 sq m / 907 sq ft



This floor plan is for representation purposes only and is not drawn to scale. Whilst every attempt has been made to ensure its accuracy measurements are approximate only and should be checked before making any decisions reliant upon them.
 Copyright Bespokeplans.co.uk 2020 (ID696292)

- Three Bedrooms
- Two Reception Rooms
- Double Glazing
- Close to Wimbledon Park Primary School
- Pets Considered
- First Months Advance Rent
- Five Weeks Security Deposit
- Holding Deposit = One Weeks Rent
- EPC Band D
- Council Tax Band E

Energy Efficiency Rating		Current	Potential
Very energy efficient - lower running costs			
(92 plus)	A		87
(81-91)	B		
(69-80)	C		
(55-68)	D	64	
(39-54)	E		
(21-38)	F		
(1-20)	G		
Not energy efficient - higher running costs			
England & Wales		EU Directive 2002/91/EC	



Although these particulars are believed to be correct, their accuracy is not guaranteed and they do not form part of any contract.

Celebrating 30 years of successful Sales and Lettings in Merton

