

**South Park Road
Wimbledon, SW19 8TA**

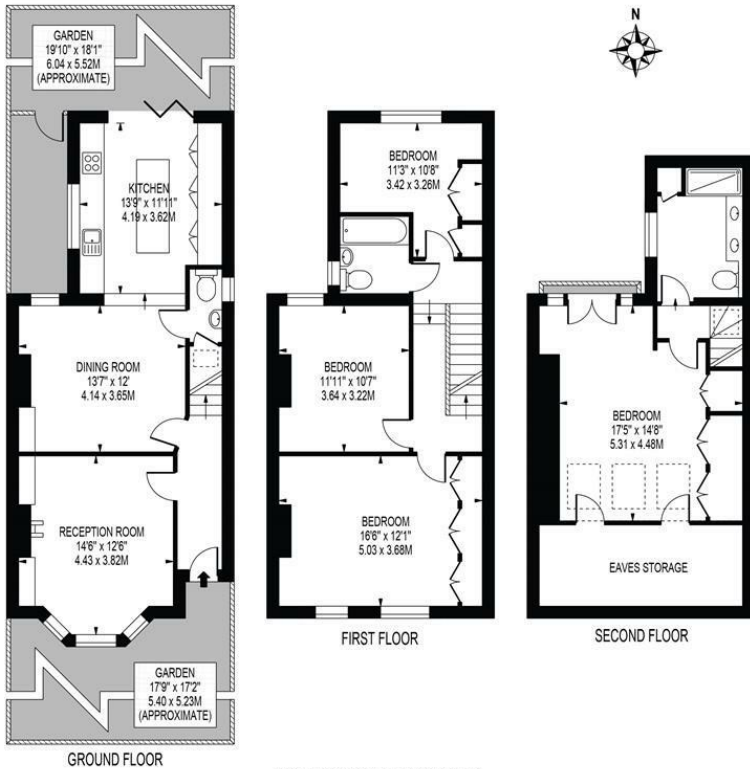
Offers In Excess Of £1,150,000 Freehold



Welcome to this exquisite Victorian detached house located on South Park Road in the heart of Wimbledon. This stunning property boasts a perfect blend of classic Victorian charm and modern amenities, making it a truly desirable home. As you step inside, you are greeted by a spacious reception room and wonderful kitchen/dining room perfect for entertaining guests or simply relaxing with your family and the benefit of four generous bedrooms and two bathrooms ensuring convenience and comfort for all residents. Situated in the prestigious South Park Gardens, this property offers not only a beautiful home but also excellent transport links, making commuting a breeze. Additionally, the area is renowned for its highly sought-after local schools, providing top-notch education options for families.

SOUTH PARK ROAD

APPROXIMATE TOTAL INTERNAL FLOOR AREA: 1613 SQ FT - 149.89 SQ M
(INCLUDING RESTRICTED HEIGHT AREA & EAVES STORAGE)
APPROXIMATE GROSS INTERNAL FLOOR AREA: 1478 SQ FT - 137.34 SQ M
(EXCLUDING RESTRICTED HEIGHT AREA & EAVES STORAGE)

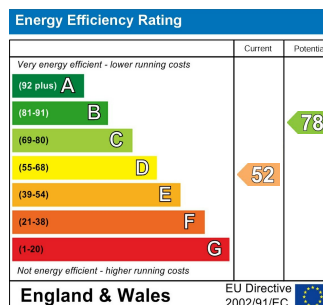


FOR ILLUSTRATION PURPOSES ONLY

THIS FLOOR PLAN SHOULD BE USED AS A GENERAL OUTLINE FOR GUIDANCE ONLY AND DOES NOT CONSTITUTE IN WHOLE OR IN PART AN OFFER OR CONTRACT. ANY INTENDING PURCHASER OR LESSEE SHOULD SATISFY THEMSELVES BY INSPECTION, SEARCHES, ENQUIRIES AND FULL SURVEY AS TO THE CORRECTNESS OF EACH STATEMENT. ANY AREAS, MEASUREMENTS OR DISTANCES QUOTED ARE APPROXIMATE AND SHOULD NOT BE USED TO VALUE A PROPERTY OR BE THE BASIS OF ANY SALE OR LET.



- Detached Victorian House
- South Park Gardens Location
- Four Bedrooms
- Recently Refurbished Bathroom Suites
- Stunning Lounge
- Open Plan Kitchen/Dining Room
- Excellent Local Schools
- Freehold
- Current EPC Rating - E
- Council Tax Band - F



For Free Mortgage Quote and Best Mortgage Rates, call an Ellisons Mortgage Advisor on 020 8944 9494



Although these particulars are believed to be correct, their accuracy is not guaranteed and they do not form part of any contract.

Celebrating 30 years of successful Sales and Lettings in Merton

