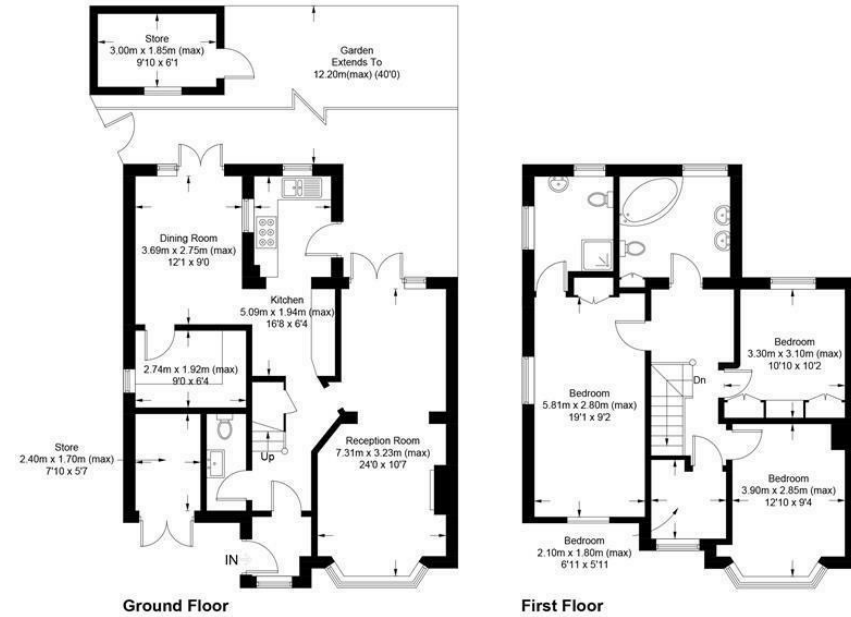
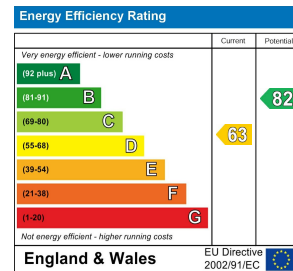


**Grand Drive, SW20**

Approximate Gross Internal Area = 130.5 sq m / 1405 sq ft  
Store = 5.5 sq m / 59 sq ft  
Total = 136 sq m / 1464 sq ft



This floor plan is for representation purposes only and is not drawn to scale.  
The Gross Internal Area includes outbuildings shown on the plan.  
Whilst every attempt has been made to ensure the accuracy of the plan measurements of doors, windows and rooms are approximate only and should be checked before making any decisions reliant upon them.  
Copyright Bespokeplans.co.uk (ID760792)



## Grand Drive Raynes Park, SW20 9NB



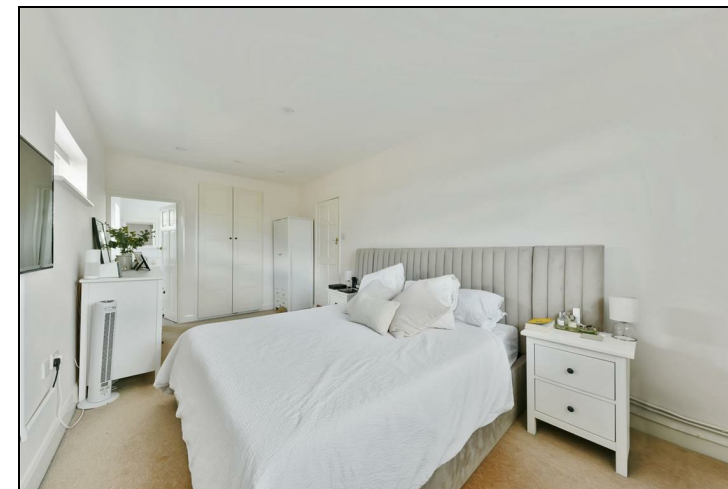
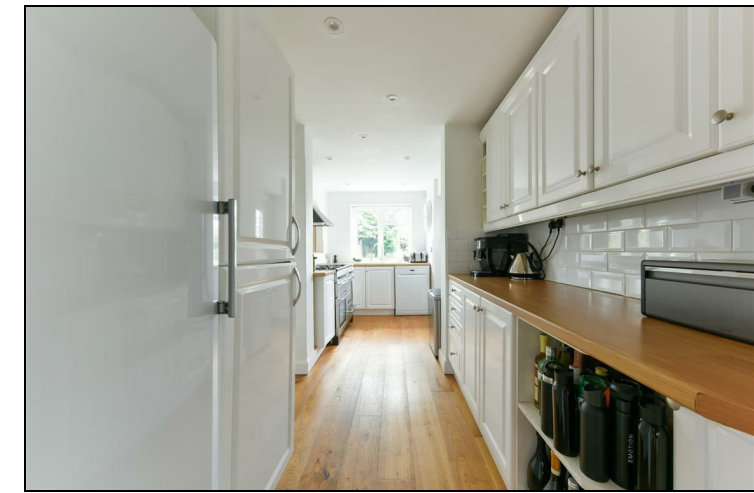
**£3,000 PCM:**

BEAUTIFUL FOUR BEDROOM, TWO BATHROOM SEMI DETACHED HOUSE  
WITH OFF STREET PARKING

Beautiful, spacious four bedroom, two bathroom "Mock Tudor" semi detached house with off street parking, located close to local Primary Schools and within a mile of Ryanes Park and Motspur Park train stations.

The ground floor features double reception room with doors to the garden, separate kitchen, utility room and dining room, as well as ground floor toilet. To the first floor are three double bedrooms, the principle with ensuite shower, one single/study room, and good size family bathroom. Lovely rear garden with shed and side access. Please note the garage is not included.

EPC band D. Council tax band F.



### SPECIFICATION:

- Four bedrooms
- Two bathrooms
- Ground floor toilet
- Utility room
- Well kept rear garden with shed
- First months rent in advance
- Five weeks security deposit
- Holding deposit = one weeks rent
- EPC band D
- Council tax band F

