

Gladstone Road Wimbledon, SW19 1QR

£800,000 Freehold



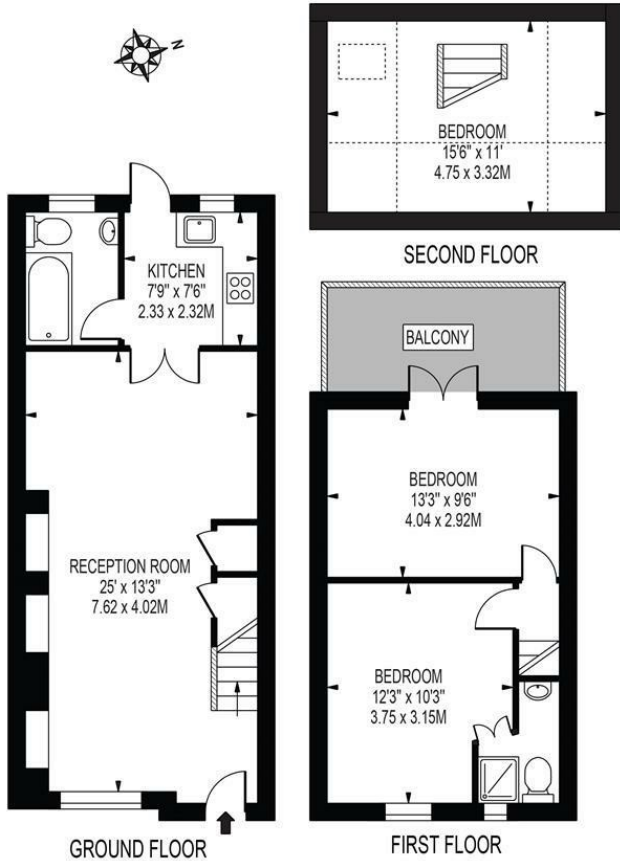
This charming end terrace Victorian cottage is part of the historic Bertram Cottages located in the heart of Wimbledon Town close to the high street and station but benefitting from its quiet location. Built circa 1880, this period cottage benefits from a fantastic through reception room, kitchen, two bedrooms (principal bedroom with en suite shower room), family bathroom and delightful West aspect rear garden. The house exudes character and warmth, offering a unique living experience in the heart of the town.

GLADSTONE ROAD

APPROXIMATE TOTAL INTERNAL FLOOR AREA: 895 SQ FT - 83.16 SQ M

(INCLUDING RESTRICTED HEIGHT AREA)

APPROXIMATE GROSS INTERNAL AREA OF RESTRICTED HEIGHT: 112 SQ FT - 10.38 SQ M

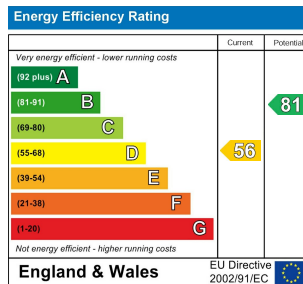


FOR ILLUSTRATION PURPOSES ONLY

THIS FLOOR PLAN SHOULD BE USED AS A GENERAL OUTLINE FOR GUIDANCE ONLY AND DOES NOT CONSTITUTE IN WHOLE OR IN PART AN OFFER OR CONTRACT. ANY INTENDING PURCHASER OR LESSEE SHOULD SATISFY THEMSELVES BY INSPECTION, SEARCHES, ENQUIRIES AND FULL SURVEY AS TO THE CORRECTNESS OF EACH STATEMENT. ANY AREAS, MEASUREMENTS OR DISTANCES QUOTED ARE APPROXIMATE AND SHOULD NOT BE USED TO VALUE A PROPERTY OR BE THE BASIS OF ANY SALE OR LET.



- Built in 1876 and Part of Bertram Cottages
- Two Double Bedrooms
- Principal Bedroom with en Suite
- Spacious Through Reception Room
- West Facing Garden
- Excellent Transport Links Close By
- Sought After Local Schools
- Freehold
- EPC Rating D
- Council Tax Band E



For Free Mortgage Quote and Best Mortgage Rates, call an Ellisons Mortgage Advisor on 020 8944 9494



Although these particulars are believed to be correct, their accuracy is not guaranteed and they do not form part of any contract.

Celebrating 30 years of successful Sales and Lettings in Merton

