

Sydney Road Raynes Park, SW20 8EG

£1,700 PCM



BEAUTIFUL AND FRESHLY DECORATED ONE BED FLAT WITH PRIVATE GARDEN.

This home has been decorated throughout with brand new white appliances, it comprises a large double bedroom, bathroom and open plan kitchen / lounge.

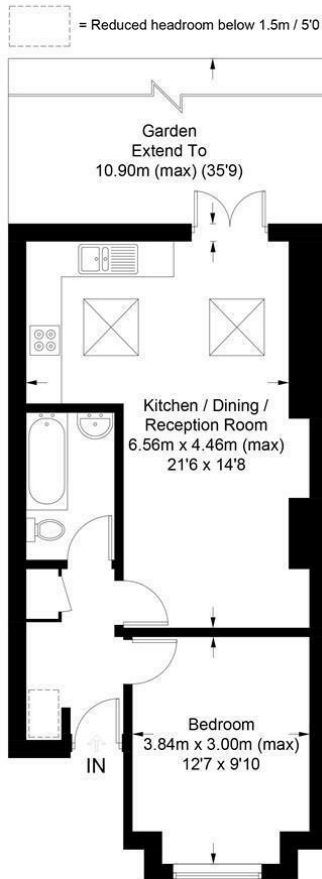
Further benefits included gas central heating and double glazing.

Sydney Road is situated in the sought after Apostles of Raynes Park and moments away from local amenities, easy access to the A3 and Trains for easy access in and out of London.

EPC C

Council Tax Band C

Sydney Road, SW20
 Approximate Gross Internal Area = 46.5 sq m / 500 sq ft



This floor plan is for representation purposes only and is not drawn to scale.
 The Gross Internal Area includes outbuildings shown on the plan.
 Whilst every attempt has been made to ensure the accuracy of the plan measurements
 of doors, windows and rooms are approximate only and should be checked before making
 any decisions reliant upon them.
 Copyright Bespokeplans.co.uk (ID846377)



- One Bedroom
- Ground Floor
- Open Plan Kitchen Lounge
- Private Garden
- Holding Deposit Required
- Five Weeks Deposit
- One Months Rent
- No Admin Fees
- EPC C
- Council Tax Band C

Energy Efficiency Rating		Current	Potential
Very energy efficient - lower running costs			
(92 plus)	A		
(81-91)	B		
(69-80)	C		
(55-68)	D		
(39-54)	E		
(21-38)	F		
(1-20)	G		
Not energy efficient - higher running costs			
England & Wales		EU Directive 2002/91/EC	



Although these particulars are believed to be correct, their accuracy is not guaranteed and they do not form part of any contract.

Celebrating 30 years of successful Sales and Lettings in Merton

