



Rainville Road, W6

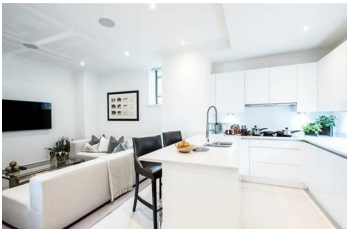
£1,395 Per Week

This spectacular, light and airy, interior designed two bedroom, two bathroom apartment with an exclusive garden and river views is available on the ground floor of this newly converted, warehouse style, gated development on the River Thames.

On offer is over 900 sq/ft of luxury living including two bedrooms with en-suite bathrooms, a large open plan kitchen/reception opening onto a small private garden, perfect for entertaining, and a separate WC. The fully fitted Metris Kitchen is complete with Miele appliances including an integrated dishwasher, washer/dryer, full height fridge freezer, oven, hob and integrated extractor fan as well as a Caple wine cooler. The bathrooms comprise of full bathroom suites with underfloor heating whilst the bedrooms boast bespoke mirrored wardrobes and automatic lights which are sure to impress. Further benefits of the apartment include a Crestron audio visual system, a digital video door entry system and pre-wiring for Sky + TV.

With its riverside location, Palace Wharf is also conveniently close to a number of transport links including Hammersmith Overground and Underground Station, Barons Court, Putney Bridge and Fulham Broadway Underground Stations, along with several regular and varied bus services which further improve accessibility.

- Interior designed
- Flexible rental terms
- Outside space
- New build gated development
- Open plan kitchen
- Underfloor heating
- Crestron Home automation system



Energy Efficiency Rating		Environmental Impact (CO ₂) Rating	
Low energy efficient - lower running costs	Current	More environmentally friendly - lower CO ₂ emissions	Current
(11-15) A		(10-14) A	
(16-20) B		(15-19) B	
(21-25) C		(20-24) C	
(26-29) D		(25-29) D	
(30-33) E		(30-34) E	
(34-38) F		(35-39) F	
(39-45) G		(40-45) G	
Not energy efficient - higher running costs		Not environmentally friendly - higher CO ₂ emissions	
England & Wales	2008/11/EC	England & Wales	2006/11/EC