



Rainville Road, Hammersmith, W6

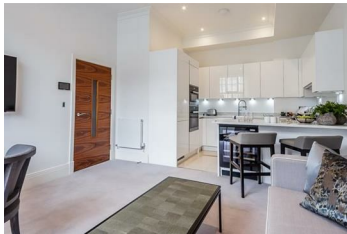
£765 Per Week

This immaculate, interior designed, ground floor one bedroom apartment within this newly converted, warehouse style, gated development on the River Thames is not to be missed.

The apartment boasts one double bedroom, a fully fitted Metris Kitchen with Miele appliances including an integrated dishwasher, washer/dryer, fridge freezer and a Caple wine cooler, high specification bathroom comprising full bathroom suite with underfloor heating, reception room with access via Crittall doors onto a small patio.

Further benefits of the apartment include a Smart Home system, high ceilings, feature windows, CCTV, Door entry system,

With its riverside location, Palace Wharf is also conveniently close to a number of transport links including Hammersmith Overground and Underground Station, Barons Court, Putney Bridge and Fulham Broadway Underground Stations, along with several regular and varied bus services which further improve accessibility.



- Interior designed
- Brand new kitchen
- High spec
- High ceilings
- New build gated development
- Spacious bedroom
- Crestron automated system
- Bright reception
- Fully-tiled bathroom
- AirCon

Energy Efficiency Rating		Environmental Impact (CO ₂) Rating	
Very energy efficient - lower running costs	Current	Very environmentally friendly - lower CO ₂ emissions	Current
(101-120) A		(101-120) A	
(81-100) B		(81-100) B	
(61-80) C		(61-80) C	
(41-60) D		(41-60) D	
(21-40) E		(21-40) E	
(1-20) F		(1-20) F	
Not energy efficient - higher running costs		Not environmentally friendly - higher CO ₂ emissions	
(G) 1-20		(G) 1-20	
England & Wales		England & Wales	
2008/11/EC		2008/11/EC	